

Hubarbeitsbühne - Genie Z-40/23N



Hubarbeitsbühne - Genie Z-40/23N

WKH5.447



Elektrisch



227



1910



2007

Marke Genie

Modell Z-40/23N

Baujahr 2007

Spezifikationen

Antrieb	Elektrisch
Kapazität	350Ah
Batteriespannung	24V
Arbeitshöhe	14320
Optionen	Nicht markierende Reifen
Bewegung	Vollgummireifen

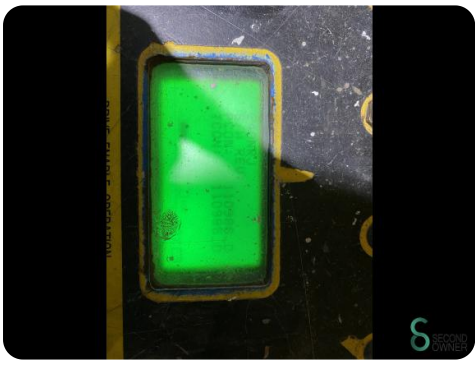
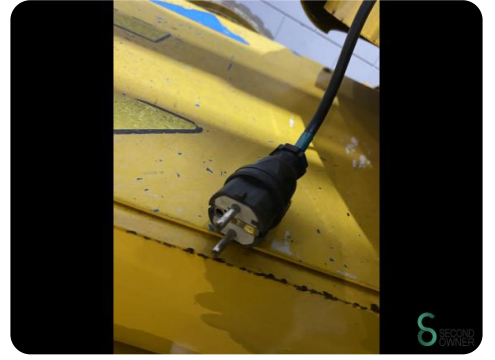
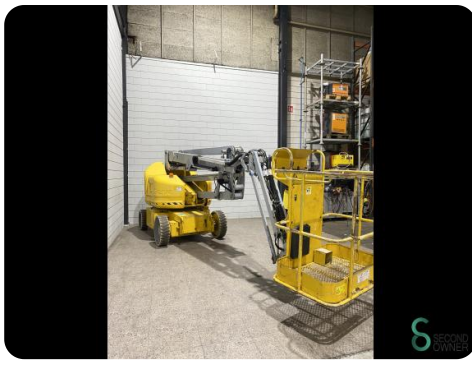
Abmessungen

Länge

Breite

Höhe

Gewicht



Genie

A TEREX COMPANY

Model: Z-40/23N

Serial number: Z40N07-266

Model year: 2007 Manufacture date: 09/18/07

Electrical schematic number: ES0388

Machine unladen weight: 15,376 lbs / 6,974 kg

Rated work load (including occupants):
500 lbs / 227 kg

Maximum number of platform occupants: 2

Maximum allowable side force: 90 lbs / 400 N

Maximum allowable inclination of the chassis:

2.5° along x 4.5° perpendicular to lift structure

Maximum wind speed: 28 mph / 12.8 m/s

Maximum platform height: 40 ft 5 in / 12.32 m

Maximum platform reach:
22 ft 8 in / 6.91 m

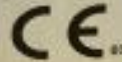
Gradeability: 30 %

Nominal Power: 2.3 kW

Country of manufacture: USA

This machine complies with:
EN 280

Genie Industries
18340 NE 78th Street
Redmond WA 98062
USA



EN-T1206

 SECOND
OWNER

Havenweg 6
6603AS Wijchen

T: +31 6 11462913
E: Koen@secondowner.com
W: <https://secondowner.com>

 SECOND
OWNER