

## Breite Hobelmaschine / Doppelseitige Hobelmaschine - Goodtek



### Breite Hobelmaschine / Doppelseitige Hobelmaschine - Goodtek

HOU5.299



2007

**Marke** Goodtek

**Modell**

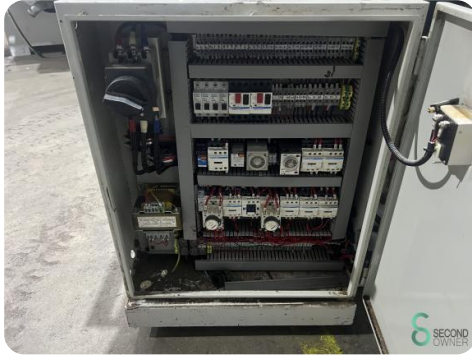
**Baujahr** 2007

#### Spezifikationen

<b>Spannung [V]</b>	400V
<b>Hu00f6heneinstellung</b>	tribe_selection_

#### Abmessungen

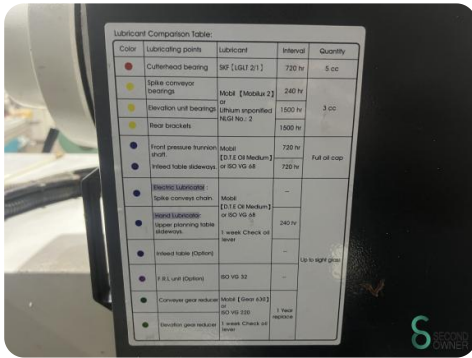
<b>Länge</b>	3000
<b>Breite</b>	1100
<b>Höhe</b>	1700
<b>Gewicht</b>	3000



Lubricant Comparison table:

Color	Lubricating points	Lubricant	Interval	Quantity
●	Cuthead bearing	BP (GL1 21)	720 hr	5 cc
●	Spike conveyor bearings	Mobil (Mobilux 2)	240 hr	
●	Elevation unit bearings	CE	1500 hr	3 cc
●	Rear tracksets	Effren appropriate NLGI No. 2	1500 hr	
●	Front pressure bearing (front)	Mobil (E12 Oil Medium)	720 hr	Full oil crop
●	Filled table slideways	at ISO VG 68	720 hr	
●	Electric Lubricator	Mobil (E12 Oil Medium)		
●	Spike conveyor chain	at ISO VG 68		
●	Special Lubricant	Mobil (Spike steering table slideways)	300 hr	
●	Inter-lub table (front)	1 week Check oil level		Up to sight glass
●	F. R.L. Left (Cutters)	ISO VG 32		
●	Conveyor gear reduction	Mobil (Gear 303)	1 year	Replace
●	Elevation gear reducer	at ISO VG 320	1 week Check oil level	







Havenweg 6  
6603AS Wijchen

**T:** +31 6 57668226  
**E:** [Glenn@secondowner.com](mailto:Glenn@secondowner.com)  
**W:** <https://secondowner.com>

