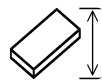


Vertikales Plattensäge / Wandsäge - Harwi Piranha 1550



Vertikales Plattensäge / Wandsäge - Harwi Piranha 1550

HOU.2702



3300mm



3kW



2019

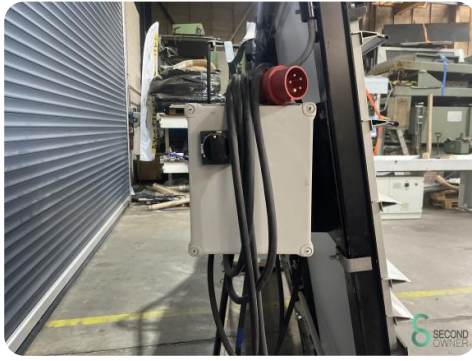
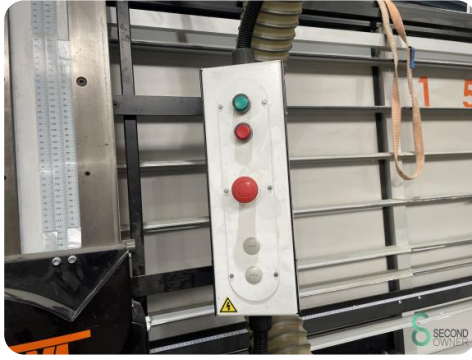
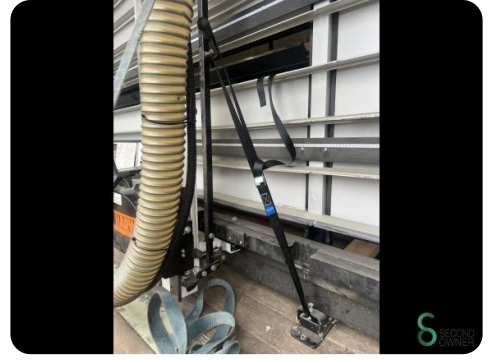
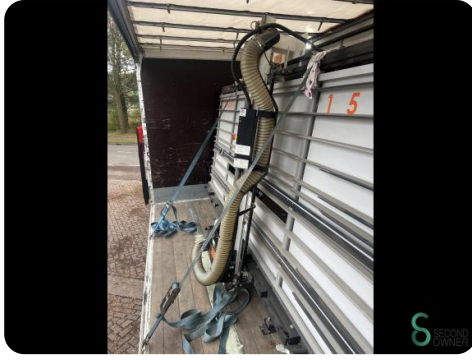
Marke	Harwi
Modell	Piranha 1550
Baujahr	2019

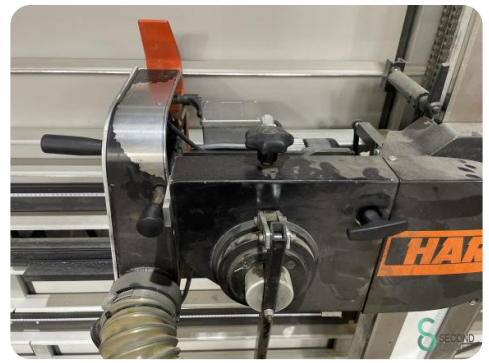
Spezifikationen

Spannung [V]	380V
Sicherung [A]	16A
Spindeldrehzahl max.	2800rpm
Motor gebremst	1
Motorleistung	3kW
Verstellbare Spindeldrehzahl	Geen

Abmessungen

Länge	4200
Breite	1200
Höhe	2450
Gewicht	485





Havenweg 6
6603AS Wijchen

T: +31 6 57668226
E: Glenn@secondowner.com
W: <https://secondowner.com>

