

Schweißgerät - Hermann Sharc 420M



Schweißgerät - Hermann Sharc 420M

MET.1719



Konventionell

Marke Hermann

Modell Sharc 420M

Baujahr

Spezifikationen

Leistung	420.0A
Modell	tribe_selection_list s.model_1.Lasapp araat MIG/MAG
Leistung	28.0kVa
Steuerung	Konventionell

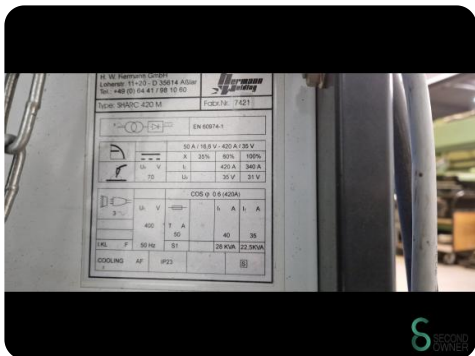
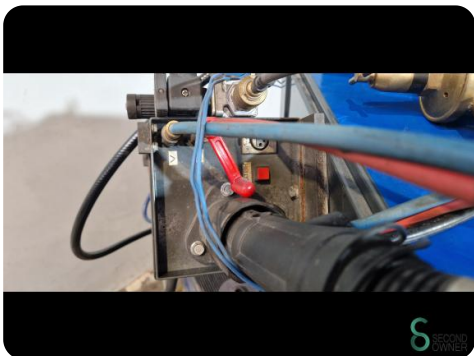
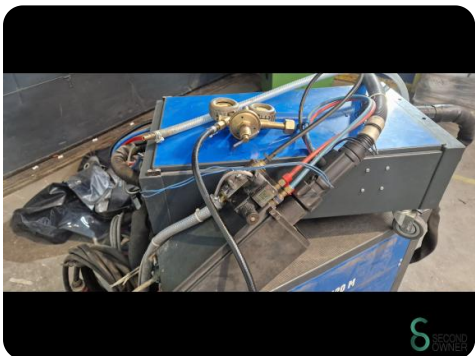
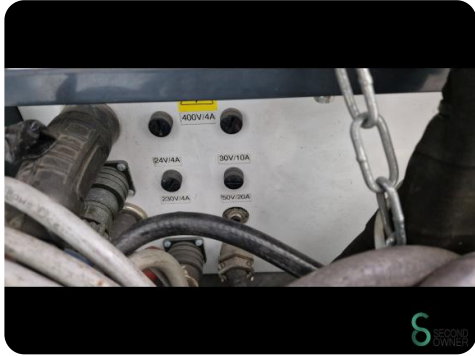
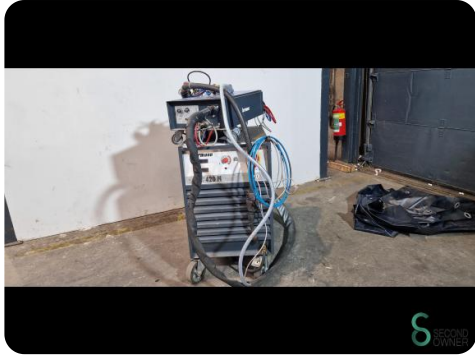
Abmessungen

Länge

Breite

Höhe

Gewicht





Havenweg 6
6603AS Wijchen

T: +31 6 14832789
E: Bram@secondowner.com
W: <https://secondowner.com>

