

Stapler - Jungheinrich EJC110



Stapler - Jungheinrich EJC110

WKH.4311



Elektrisch



5795



2005

Marke Jungheinrich

Modell

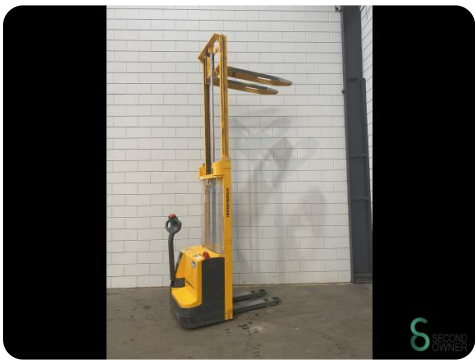
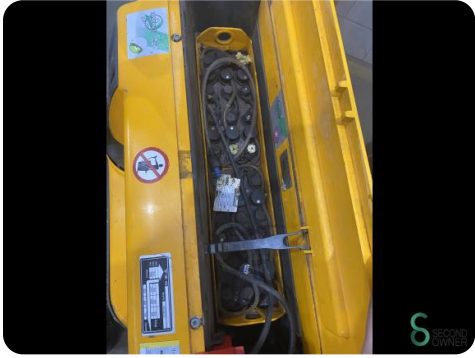
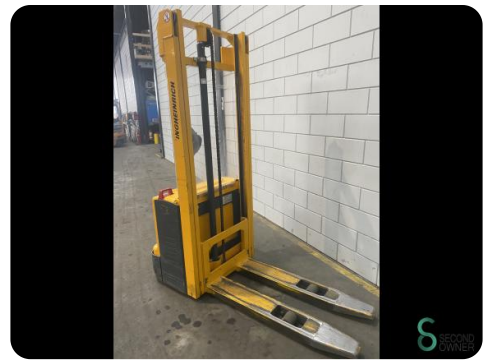
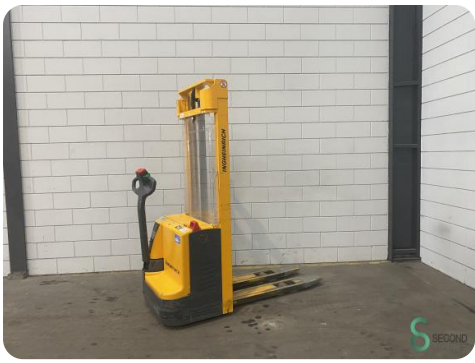
Baujahr 2005

Spezifikationen

Antrieb	Elektrisch
Kapazität	150Ah
Marke/Typ	Jungheinrich
Batteriespannung	24V
Baujahr der Batterie	2 PZB
Durchfahrtsbreite	2050mm

Abmessungen

Länge	1700
Breite	800
Höhe	
Gewicht	850



Havenweg 6
6603AS Wijchen

T: +31 6 11462913
E: Koen@secondowner.com
W: <https://secondowner.com>

