

## Hubwagen - Jungheinrich ETH-C 100



### Hubwagen - Jungheinrich ETH-C 100

WKH.2490



Elektrisch



2007



743

**Marke** Jungheinrich

**Modell** ETH-C 100

**Baujahr** 2007

### Spezifikationen

**Antrieb** Elektrisch

**Kapazität** 620Ah

**Batteriespannung** 48V  
g

**Hubkraft** 10000kg

**Hubhöhe** 450mm

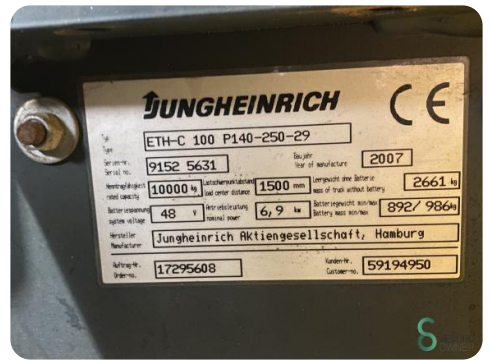
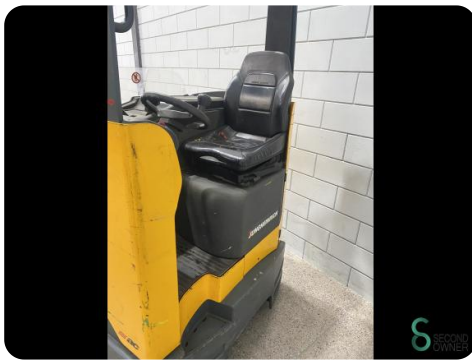
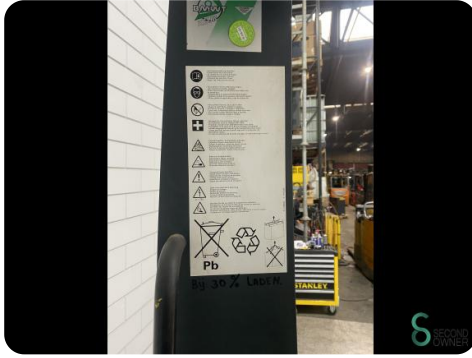
### Abmessungen

**Länge** mm

**Breite** mm

**Höhe** mm

**Gewicht** kg



Havenweg 6  
6603AS Wijchen

T: +31 644300552  
E: [tess@secondowner.com](mailto:tess@secondowner.com)  
W: <https://secondowner.com>



<b>JUNGHEINRICH</b>		CE	
Type:	ETH-C 100 P140-250-29	Year of manufacture:	2007
Serial no.:	9152 5631	Weight with battery:	2661 kg
Max. load capacity:	10000 kg	Load center distance:	1500 mm
Battery system voltage:	48 V	Battery weight with battery:	892/ 986 kg
Manufacturer:	Jungheinrich Aktiengesellschaft, Hamburg		
Manufacturer's no.:	17295608	Customer no.:	59194950