

Schubmaststapler - Jungheinrich ETV216



Schubmaststapler - Jungheinrich ETV216

WKH.4128



Elektrisch



1600kg



21396



2012

Marke Jungheinrich

Modell

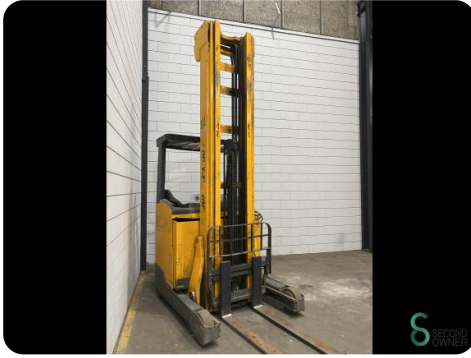
Baujahr 2012

Spezifikationen

Antrieb	Elektrisch
Kapazität	775Ah
Batteriespannung	48V
Optionen	Frei-hub, Nicht markierende Reifen, Joystick
Freihub	2570mm
Durchfahrtsbreite	3450mm

Abmessungen

Länge	1900
Breite	1270
Höhe	
Gewicht	3864



ETV 214 DL GE 120 872DZ
 91076519 2012
 1400 kg 600 mm
 48 V 1063,1175 kg
 2689 kg
 Jungheinrich AG, 22047 Hamburg, Germany
JUNGHEINRICH

CE U>75V		HAWKER S.A. Energy S.p.A. Via... 1144... www.energiesolutions.com	
HAWKER PERFECT PLUS			
DESCRIPTION	5-PZS-775	NOMINAL VOLTAGE	48 V
TYPE		STANDARD NOMINAL	
TYPE		RECHARGING	
TYPE		NOISE	
MODEL NUMBER	5492642008	CAPACITY	C _s 775.00 Ah
NO. OF CELLS		CAPACITY	
SYMBOLIC REFERENCE		NUMBER OF CELLS	24 PCS
ORIGINAL SUPPLIER	0935-50011-00	NO. OF ENTRIES	
NO. OF ENTRIES		MAXIMUM WEIGHT	1.145.00 kg
DATE OF MANUFACTURE	120219146+147/JUNGHEINRICH	NO. OF ENTRIES	
PRODUCTION DATE	2013.03.2012	RECHARGE TO CORRECT	186.00 l
MADE IN		RECHARGE TO CORRECT	
MADE IN		RECHARGE TO CORRECT	

• Gebrauchsanweisung beachten.
 • Please follow the instructions.
 • Se conformer à la notice d'emploi.
 • Gebrauchsanweisung lesen.



Havenweg 6
6603AS Wijchen

T: +31 6 11462913
E: Koen@secondowner.com
W: <https://secondowner.com>