

Schubmaststapler - Komatsu



Schubmaststapler - Komatsu

WKH.4060



Elektrisch



1400kg



3482



2010

Marke Komatsu

Modell

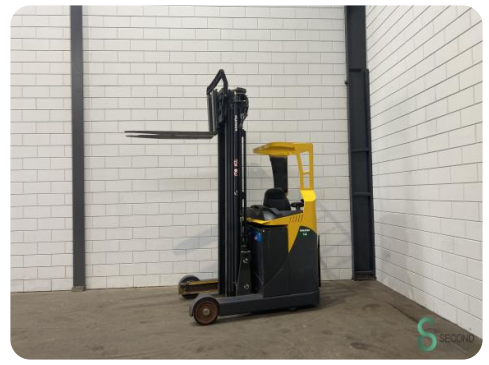
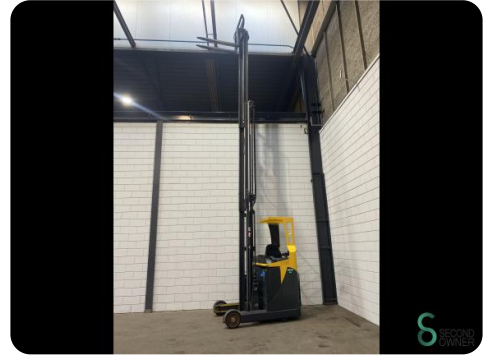
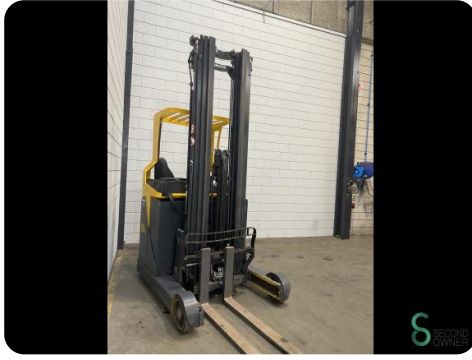
Baujahr 2010

Spezifikationen

Antrieb	Elektrisch
Batteriespannung	48V
Optionen	Frei-hub
Freihub	2350mm
Durchfahrtshu00f6he	2900mm
Gabelzinkenlu00e4nge	1150mm

Abmessungen

Lnge	1900
Breite	1260
Hhe	2900
Gewicht	3506



Havenweg 6
6603AS Wijchen

T: +31 6 11462913
E: Koen@secondowner.com
W: <https://secondowner.com>

