

## Stapler - Manitou LOC MA.150



## Stapler - Manitou LOC MA.150

WKH.2839



Elektrisch



1995

**Marke** Manitou

**Modell**

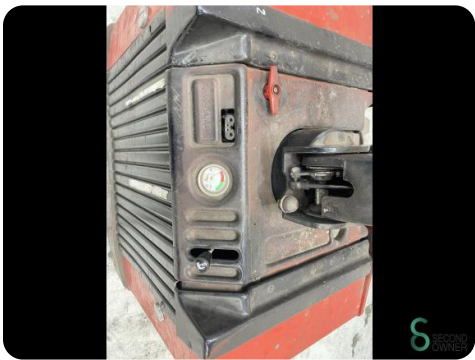
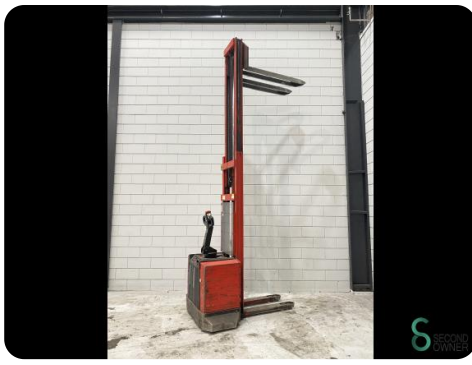
**Baujahr** 1995

### Spezifikationen

<b>Antrieb</b>	Elektrisch
<b>Batteriespannung</b>	24V
<b>Durchfahrtschu00f6he</b>	2400mm
<b>Gabelzinkenlu00e4nge</b>	1150mm
<b>Hubkraft</b>	1500kg
<b>Mast</b>	Duplex

### Abmessungen

<b>Lnge</b>	1900
<b>Breite</b>	900
<b>Hhe</b>	2400
<b>Gewicht</b>	1995



Havenweg 6  
6603AS Wijchen

T: +31 6 11462913  
E: [Koen@secondowner.com](mailto:Koen@secondowner.com)  
W: <https://secondowner.com>

