

## Gabelstapler - Mitsubishi FG30N



## Gabelstapler - Mitsubishi FG30N

WKH5.381



LPG



3800mm



3000kg



9867



1995

**Marke** Mitsubishi

**Modell** FG30N

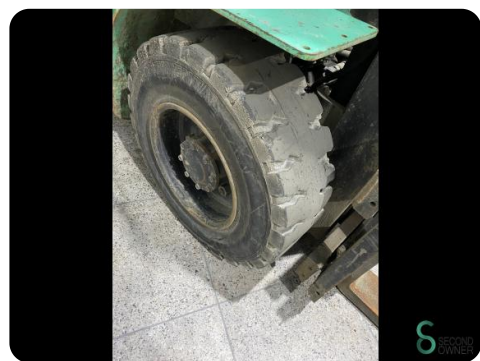
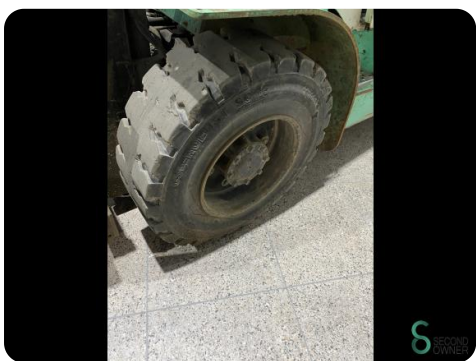
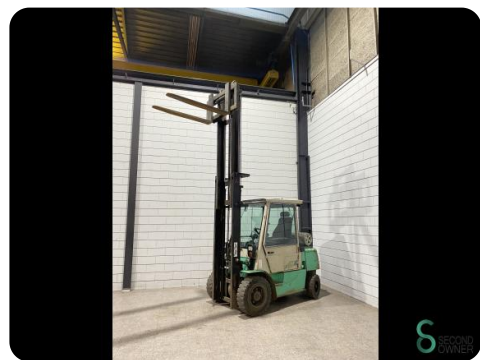
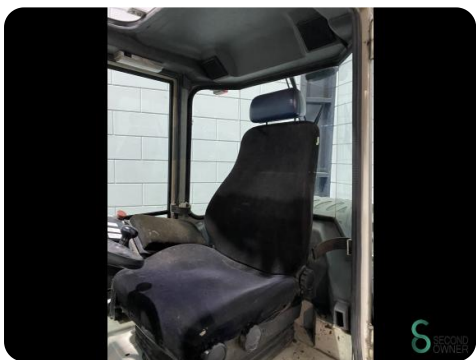
**Baujahr** 1995

### Spezifikationen

<b>Antrieb</b>	LPG
<b>Optionen</b>	Volle Kabine, Arbeitsscheinwerfer, Heizung, Ra...
<b>Maximale Gabelbreite</b>	850mm
<b>Durchfahrtsbreite</b>	2620mm
<b>Anbaugeräte</b>	Seitenverschiebung
<b>Gabelzinkenlänge</b>	1220mm

### Abmessungen

<b>Länge</b>	2700
<b>Breite</b>	1250
<b>Höhe</b>	2620
<b>Gewicht</b>	4240





Havenweg 6  
6603AS Wijchen

**T:** +31 6 11462913  
**E:** [Koen@secondowner.com](mailto:Koen@secondowner.com)  
**W:** <https://secondowner.com>

