

## Schubmaststapler - Still



### Schubmaststapler - Still

WKH.4252



Elektrisch



1800kg



19253



2017

**Marke** Still

**Modell**

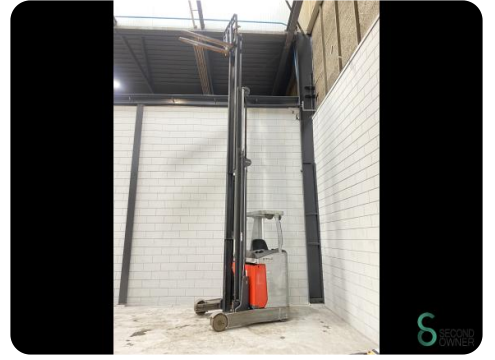
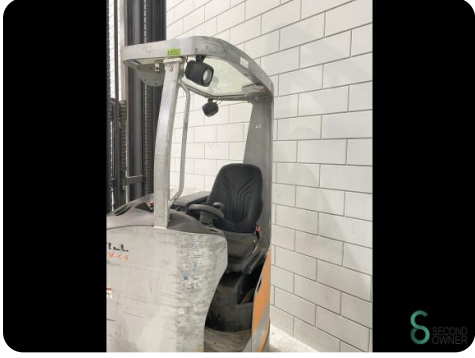
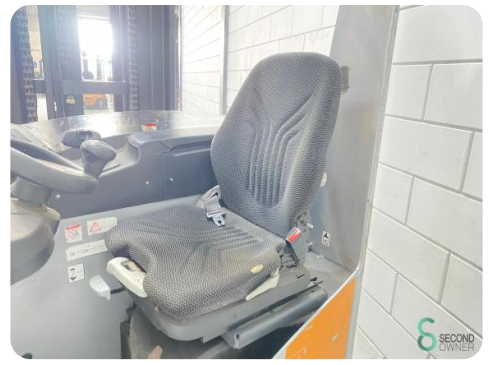
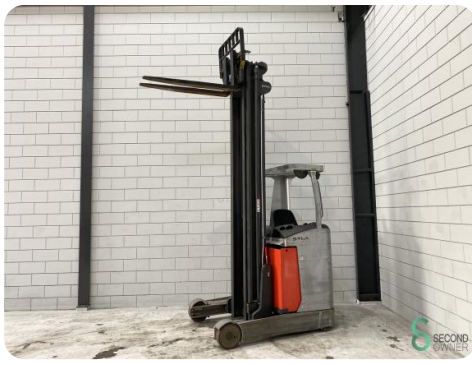
**Baujahr** 2017

### Spezifikationen

<b>Antrieb</b>	Elektrisch
<b>Kapazität</b>	620Ah
<b>Batteriespannung</b>	48V
<b>Freihub</b>	3200mm
<b>Durchfahrtsbreite</b>	3600mm
<b>Gabelzinnenlänge</b>	1200mm

### Abmessungen

<b>Länge</b>	1900
<b>Breite</b>	1270
<b>Höhe</b>	3600
<b>Gewicht</b>	3766



Havenweg 6  
6603AS Wijchen

T: +31 6 11462913  
E: [Koen@secondowner.com](mailto:Koen@secondowner.com)  
W: <https://secondowner.com>

