

## Palettenwagen - Still EXU-S24



## Palettenwagen - Still EXU-S24

WKH.4442



Elektrisch



7126



2015

**Marke** Still

**Modell** EXU-S24

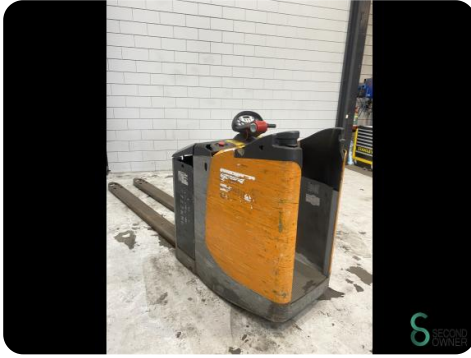
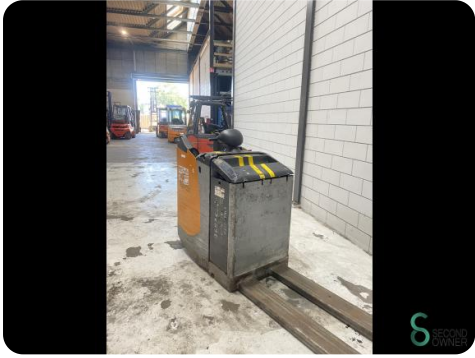
**Baujahr** 2015

### Spezifikationen

<b>Antrieb</b>	Elektrisch
<b>Gabelzinkenlänge</b>	2400mm
<b>Hubkraft</b>	2400kg
<b>Hubhöhe</b>	200mm

### Abmessungen

<b>Länge</b>	3600
<b>Breite</b>	800
<b>Höhe</b>	
<b>Gewicht</b>	1259



Havenweg 6  
6603AS Wijchen

T: +31 6 11462913  
E: [Koen@secondowner.com](mailto:Koen@secondowner.com)  
W: <https://secondowner.com>