

## Stapler - Still EGV-S14



## Stapler - Still EGV-S14

WKH.4709



Elektrisch



3423



2007

**Marke** Still

**Modell** EGV-S14

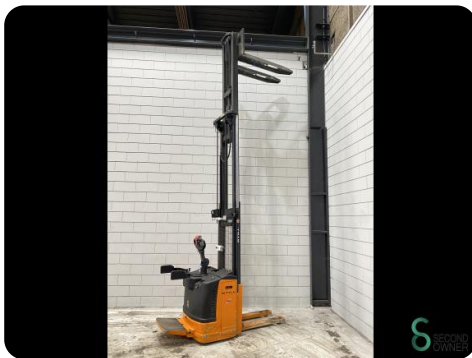
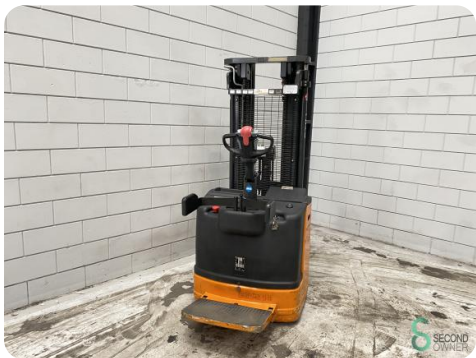
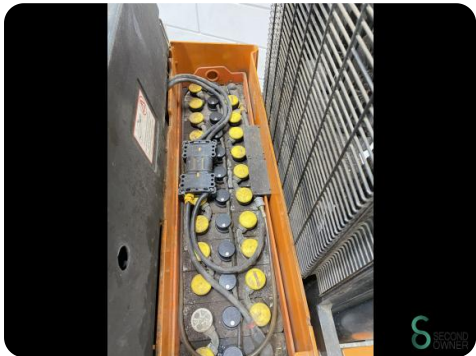
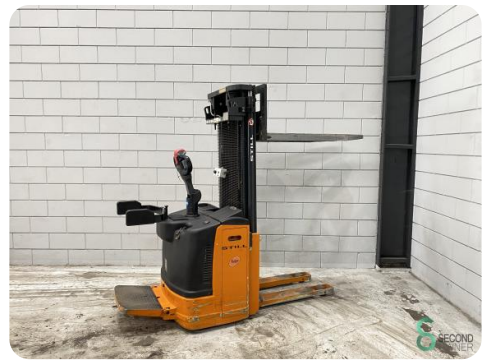
**Baujahr** 2007

### Spezifikationen

<b>Antrieb</b>	Elektrisch
<b>Kapazität</b>	00e4t
<b>345Ah</b>	
<b>Marke/Typ</b>	3 PZS 345 FMP
<b>Batteriespannung</b>	24V
<b>g</b>	
<b>Baujahr der Batterie</b>	2007
<b>Prüfung bis</b>	Fiamm motive power

### Abmessungen

<b>Länge</b>	2300
<b>Breite</b>	800
<b>Höhe</b>	1970
<b>Gewicht</b>	1363



Havenweg 6  
6603AS Wijchen

T: +31 6 11462913  
E: Koen@secondowner.com  
W: <https://secondowner.com>

