

## Stapler - Still EXU-SF14



## Stapler - Still EXU-SF14

WKH.4249



Elektrisch



3949



2018

**Marke** Still

**Modell** EXU-SF14

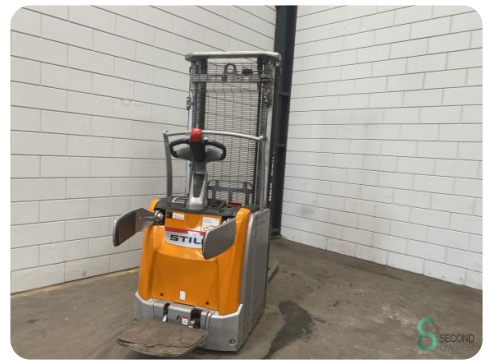
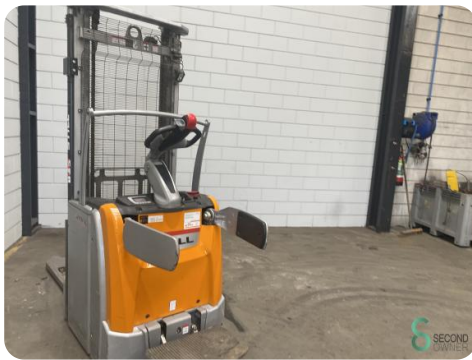
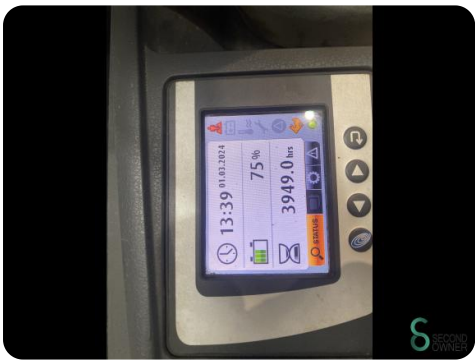
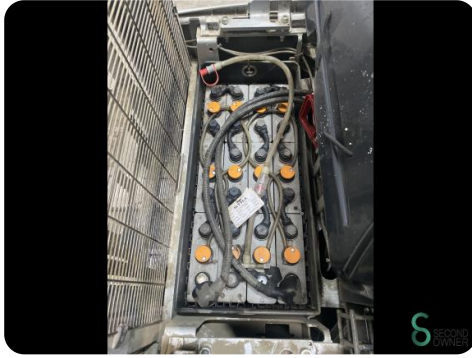
**Baujahr** 2018

### Spezifikationen

<b>Antrieb</b>	Elektrisch
<b>Kapazität</b>	345Ah
<b>Marke/Typ</b>	3 PZS 345
<b>Batteriespannung</b>	24V
<b>Baujahr der Batterie</b>	2018
<b>Durchfahrtsbreite</b>	2100mm

### Abmessungen

<b>Länge</b>	2400
<b>Breite</b>	800
<b>Höhe</b>	2100
<b>Gewicht</b>	1468



Havenweg 6  
6603AS Wijchen

T: +31 6 11462913  
E: Koen@secondowner.com  
W: <https://secondowner.com>

