

## Stapler - Still EXV-SF16



## Stapler - Still EXV-SF16

WKH.4152



Elektrisch



3412



2018

**Marke** Still

**Modell** EXV-SF16

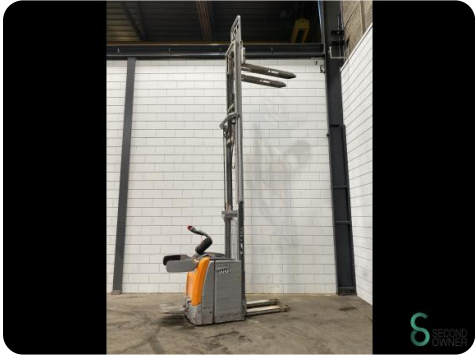
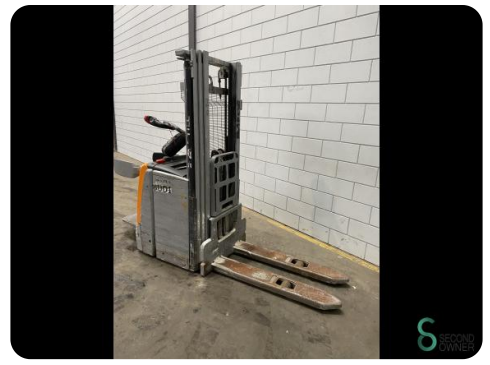
**Baujahr** 2018

### Spezifikationen

<b>Antrieb</b>	Elektrisch
<b>Batteriespannung</b>	24V
<b>Freihub</b>	1450mm
<b>Durchfahrtschu00f6he</b>	1900mm
<b>Gabelzinkenlu00e4nge</b>	1150mm
<b>Hubkraft</b>	1600kg

### Abmessungen

<b>Lnge</b>	2400
<b>Breite</b>	800
<b>Hhe</b>	1900
<b>Gewicht</b>	1586



Havenweg 6  
6603AS Wijchen

T: +31 6 11462913  
E: Koen@secondowner.com  
W: <https://secondowner.com>

