

## Stapler - Still EXV-SF16



## Stapler - Still EXV-SF16

WKH.4112



Elektrisch



4885



2017

**Marke** Still

**Modell** EXV-SF16

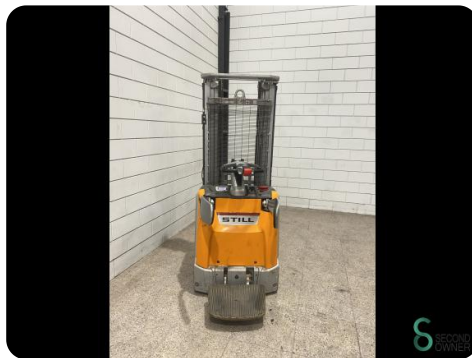
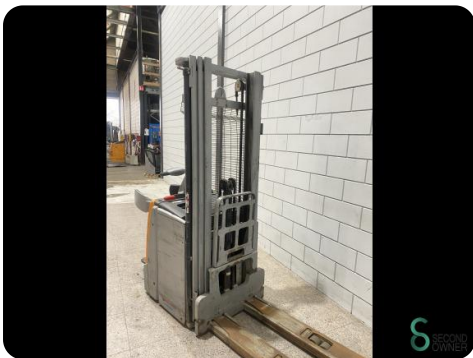
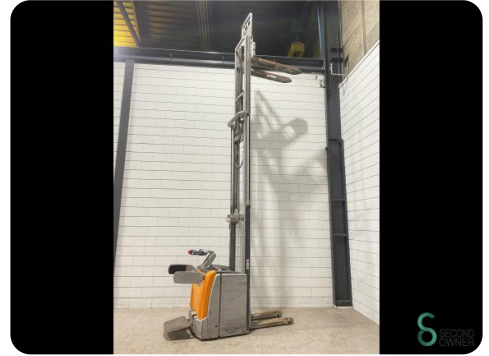
**Baujahr** 2017

### Spezifikationen

<b>Antrieb</b>	Elektrisch
<b>Batteriespannung</b>	24V
<b>Optionen</b>	Frei-hub
<b>Freihub</b>	1600mm
<b>Durchfahrtshu00f6he</b>	2070mm
<b>Gabelzinkenlu00e4nge</b>	1150mm

### Abmessungen

<b>Lnge</b>	2400
<b>Breite</b>	800
<b>Hhe</b>	2070
<b>Gewicht</b>	1618



Havenweg 6  
6603AS Wijchen

T: +31 6 11462913  
E: Koen@secondowner.com  
W: <https://secondowner.com>

