

## Schubmaststapler - Still FM-X14



## Schubmaststapler - Still FM-X14

WKH.4489



1400kg



2017



6779



Elektrisch

**Marke** Still

**Modell** FM-X14

**Baujahr** 2017

### Spezifikationen

**Antrieb** Elektrisch

**Kapazität** 775Ah

**Marke/Typ** Triathlon 5 PzS  
775

**Batteriespannung** 48V  
g

**Prüfung bis** 11-2024

**Freihub** 3010mm

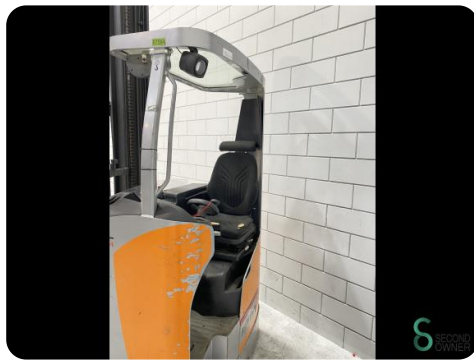
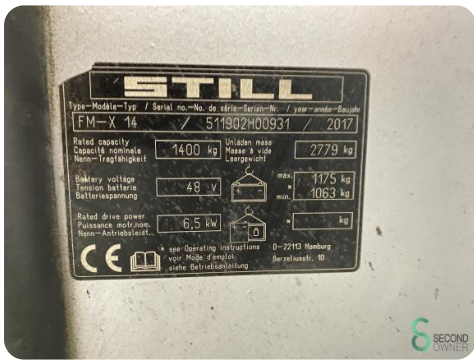
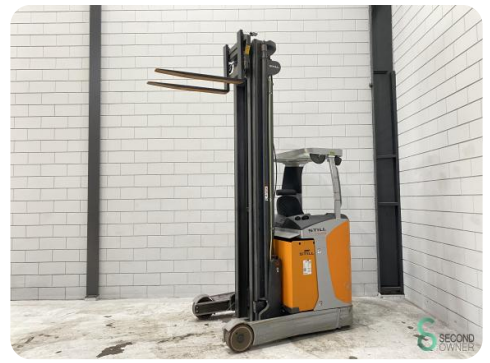
### Abmessungen

**Länge** 1900

**Breite** 1270

**Höhe** 3500

**Gewicht** 3954



Havenweg 6  
6603AS Wijchen

T: +31 6 11462913  
E: Koen@secondowner.com  
W: <https://secondowner.com>

