

Schubmaststapler - Still FM-X14



Schubmaststapler - Still FM-X14

WKH5.781



1400kg



2019



10789



Elektrisch

Marke Still

Modell FM-X14

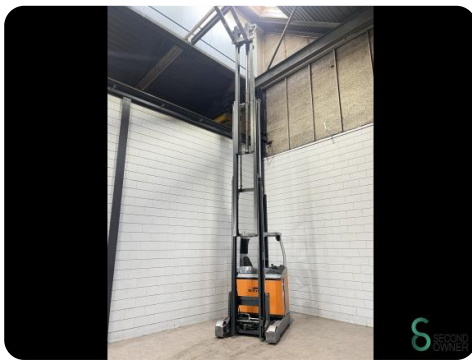
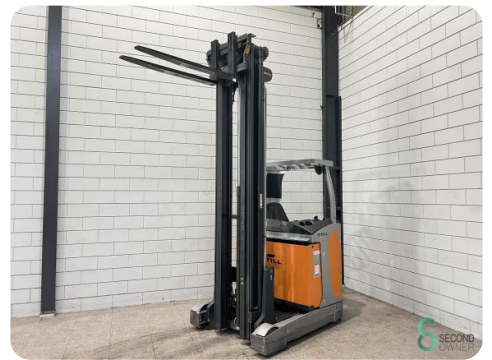
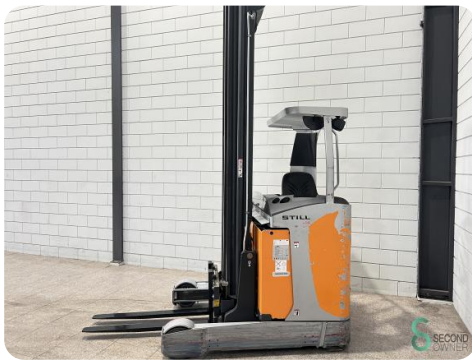
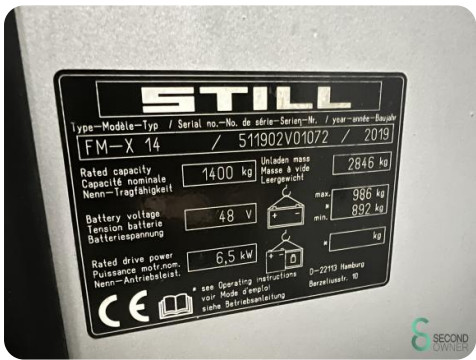
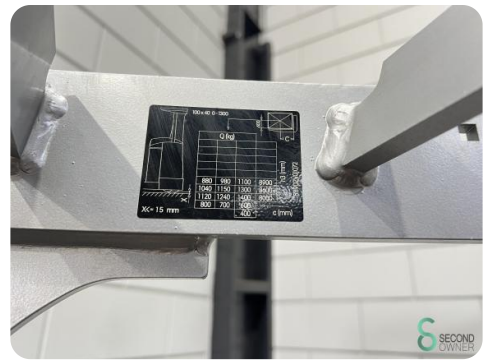
Baujahr 2019

Spezifikationen

Antrieb	Elektrisch
Kapazität	620Ah
Marke/Typ	Still 4PzS620
Batteriespannung	48V
Baujahr der Batterie	2019
Optionen	Frei-hub, Joystick

Abmessungen

Länge	1750
Breite	1270
Höhe	3520
Gewicht	3800





Havenweg 6
6603AS Wijchen

T: +31 6 11462913
E: Koen@secondowner.com
W: <https://secondowner.com>

