

Schubmaststapler - Still FM-X17



Schubmaststapler - Still FM-X17

WKH5.810



Elektrisch



1700kg



3416



2019

Marke Still

Modell FM-X17

Baujahr 2019

Spezifikationen

Antrieb Elektrisch

Kapazität 775Ah

Marke/Typ Still

Batteriespannung 48V

Baujahr der Batterie 2019

Optionen tribe_selection_lists.opties.Weegsystem, Camera, Frei-hub, Hoogtemeter

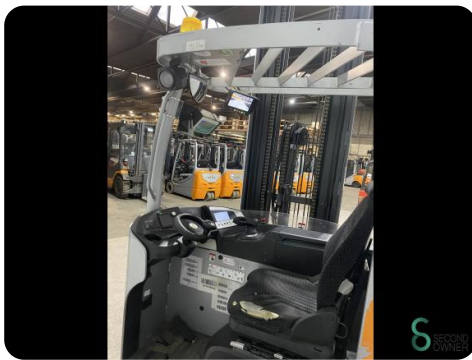
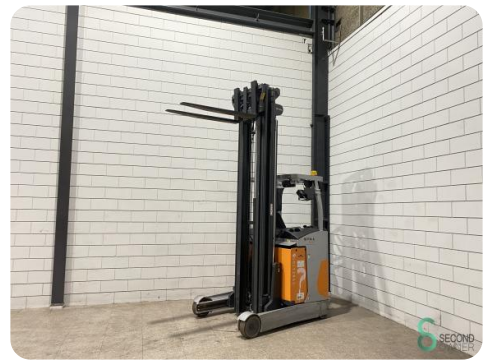
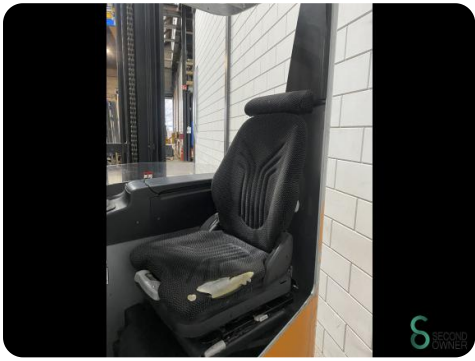
Abmessungen

Länge

Breite

Höhe

Gewicht





Havenweg 6
6603AS Wijchen

T: +31 6 11462913
E: Koen@secondowner.com
W: <https://secondowner.com>

