

## Vertikales Plattensäge / Wandsäge - Striebig Automat TRK 6220AV



## Vertikales Plattensäge / Wandsäge - Striebig Automat TRK 6220AV

HOU.2738



4kW



1995

**Marke** Striebig

**Modell** Automat TRK 6220AV

**Baujahr** 1995

### Spezifikationen

**Motorleistung** 4kW

**Automatisch** 1

**Vertikalschnitt** Ja

**Horizontalschnitt** Ja

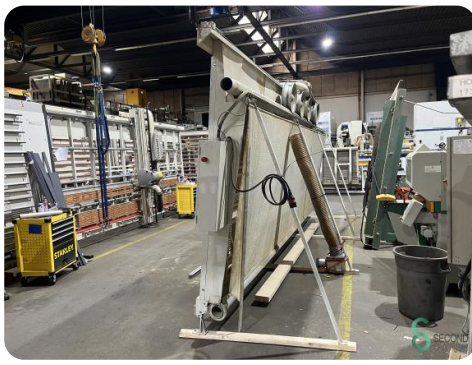
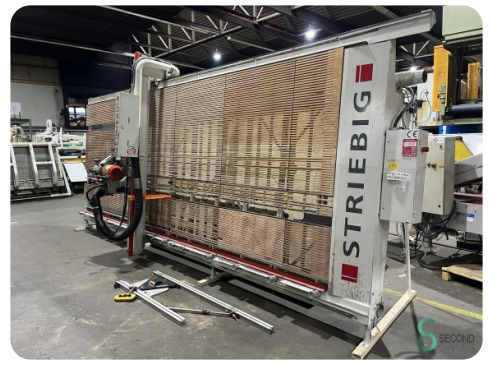
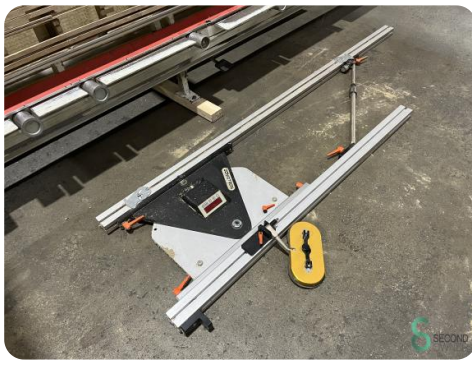
### Abmessungen

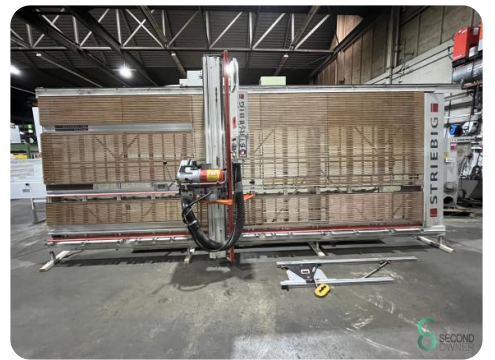
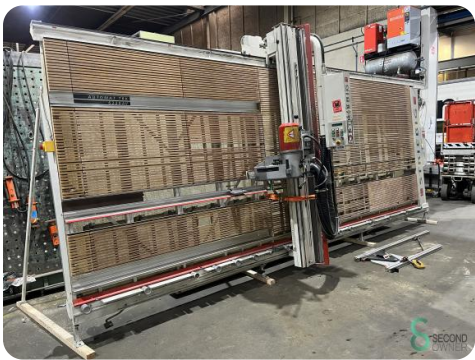
**Länge** 6500

**Breite** 2450

**Höhe**

**Gewicht** 1000







Havenweg 6  
6603AS Wijchen

**T:** +31 6 57668226  
**E:** Glenn@secondowner.com  
**W:** <https://secondowner.com>

