

Forklift - Caterpillar EP30K PAC



Forklift - Caterpillar EP30K PAC

WKH.4822



Elektric



4050mm



3000kg



5508



2011

Brand Caterpillar

Model EP30K PAC

Year 2011

Specifications

Drive Elektric

Capacity 775Ah

Brand/Type Linde

Battery voltage 80V

Battery year of construction 2018

Options Work lights

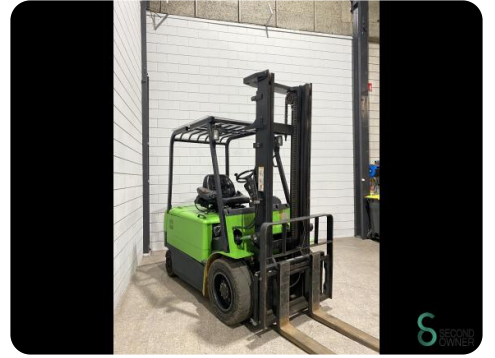
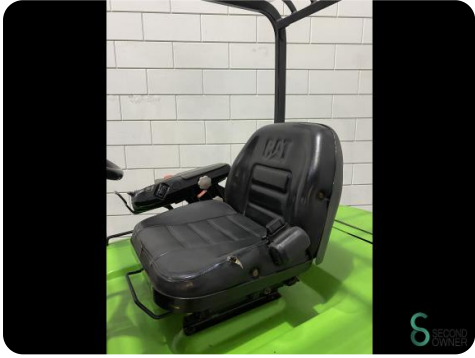
Dimensions

Length 2700

Width 1200

Height 2580

Weight 4941





Havenweg 6
6603AS Wijchen

T: +31 6 11462913
E: Koen@secondowner.com
W: <https://secondowner.com>

