

Forklift - Cesab B316



Forklift - Cesab B316

WKH.2989



Elektric



3240mm



1600kg



10358



2011

Brand Cesab

Model B316

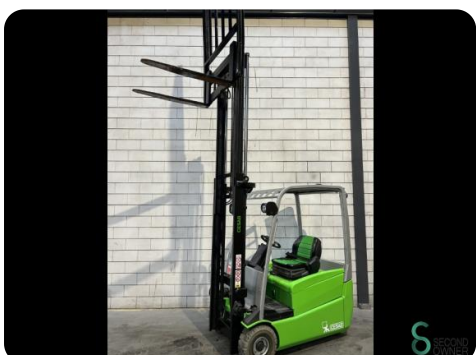
Year 2011

Specifications

Drive	Elektric
Capacity	750Ah
Battery voltage	48V
Options	Non-marking tires
Overhead clearance	2170mm
Attachment	Side-shift

Dimensions

Length	2100
Width	1050
Height	2150
Weight	



Havenweg 6
6603AS Wijchen

T: +31 6 11462913
E: Koen@secondowner.com
W: <https://secondowner.com>

