

Forklift - Crown SC4240-1.8



Forklift - Crown SC4240-1.8

WKH.4603



Elektric



4800mm



1800kg



3558



2010

Brand Crown

Model

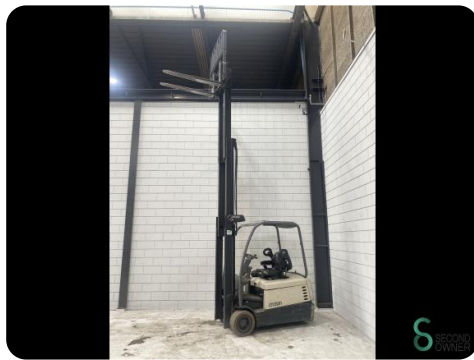
Year 2010

Specifications

Drive	Elektric
Capacity	575Ah
Battery voltage	48V
Battery year of construction	2010
Inspection valid until	02.2025
Options	Free-lift, Non-marking tires

Dimensions

Length	2000
Width	1150
Height	2120
Weight	3671



Havenweg 6
6603AS Wijchen

T: +31 6 11462913
E: Koen@secondowner.com
W: <https://secondowner.com>

