

## Aerial work platform - Genie Z-40/23N



## Aerial work platform - Genie Z-40/23N

WKH5.447



Elektric



227



1910



2007

**Brand** Genie

**Model** Z-40/23N

**Year** 2007

### Specifications

**Drive** Elektric

**Capacity** 350Ah

**Battery voltage** 24V

**Working height** 14320

**Options** Non-marking tires

**Movement** Solid rubber tires

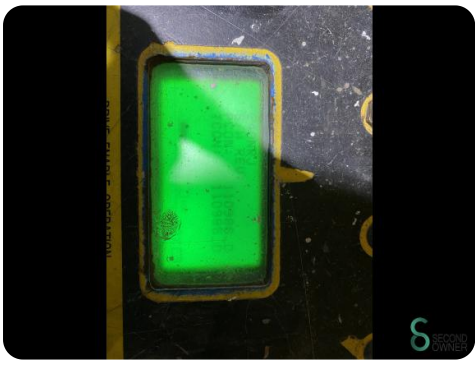
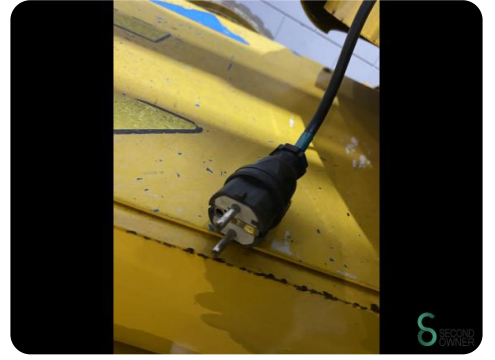
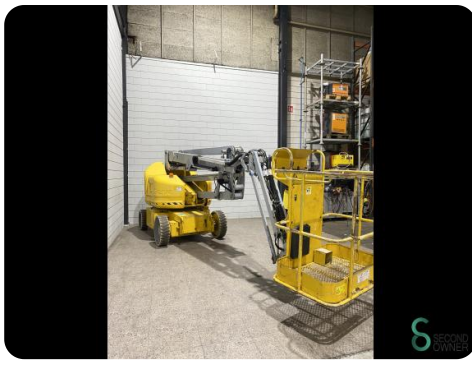
### Dimensions

**Length**

**Width**

**Height**

**Weight**



# Genie

A TEREX COMPANY

Model: Z-40J23N

Serial number: Z40ND7-266

Model year: 2007      Manufacture date: 09/18/07

Electrical schematic number: ES0388

Machine unladen weight: 15,376 lbs / 6,974 kg

Rated work load (including occupants):  
500 lbs / 227 kg

Maximum number of platform occupants: 2

Maximum allowable side force: 80 lbs / 400 N

Maximum allowable inclination of the chassis:

2.5° along x 4.5° perpendicular to lift structure

Maximum wind speed: 28 mph / 12.8 m/s

Maximum platform height: 40 ft 5 in / 12.32 m

Maximum platform reach:  
22 ft 8 in / 6.91 m

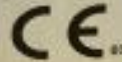
Gradeability: 30 %

Nominal Power: 2.3 kW

Country of manufacture: USA

This machine complies with:  
EN 280

Genie Industries  
18340 NE 78th Street  
Redmond WA 98062  
USA



EN-T1206

 SECOND  
OWNER

Havenweg 6  
6603AS Wijchen

T: +31 6 11462913  
E: [Koen@secondowner.com](mailto:Koen@secondowner.com)  
W: <https://secondowner.com>

 SECOND  
OWNER