

Forklift - Hyster E 2.50 XM



Forklift - Hyster E 2.50 XM

WKH5.614



Elektric



7200mm



2500kg



5213



2007

Brand Hyster

Model E 2.50 XM

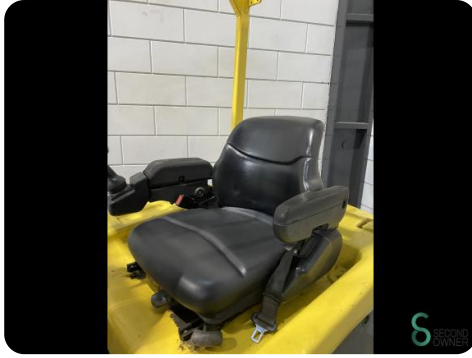
Year 2007

Specifications

Drive	Elektric
Battery voltage	80V
Options	Free-lift, Work lights, Non- marking tires, Joystick
Maximum fork width	750mm
Overhead clearance	3080mm
Attachment	Side-shift

Dimensions

Length	2200
Width	1200
Height	3080
Weight	4250





Havenweg 6
6603AS Wijchen

T: +31 6 11462913
E: Koen@secondowner.com
W: <https://secondowner.com>