

## Forklift - Hyster J3.5XM



### Forklift - Hyster J3.5XM

WKH.3296



Elektric



3650mm



3500kg



54000



2016

**Brand** Hyster

**Model** J3.5XM

**Year** 2016

### Specifications

<b>Drive</b>	Elektric
<b>Capacity</b>	700Ah
<b>Battery voltage</b>	80V
<b>Options</b>	Work lights
<b>Overhead clearance</b>	2400mm
<b>Attachment</b>	Side-shift, Fork positioner

### Dimensions

**Length**

---

**Width**

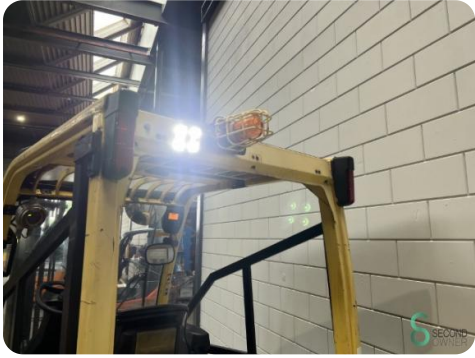
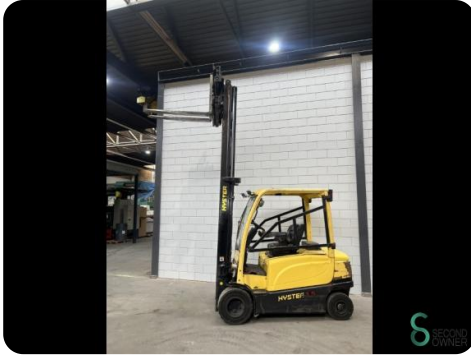
---

**Height**

---

**Weight**

---





Havenweg 6  
6603AS Wijchen

**T:** +31 6 11462913  
**E:** [Koen@secondowner.com](mailto:Koen@secondowner.com)  
**W:** <https://secondowner.com>

