

## Pallet truck - Jungheinrich ETH-C 100



### Pallet truck - Jungheinrich ETH-C 100

WKH.2490



Elektric



743



2007

**Brand** Jungheinrich

**Model** ETH-C 100

**Year** 2007

#### Specifications

<b>Drive</b>	Elektric
<b>Capacity</b>	620Ah
<b>Battery voltage</b>	48V
<b>Lifting capacity</b>	10000kg
<b>Lifting height</b>	450mm

#### Dimensions

**Length**

---

**Width**

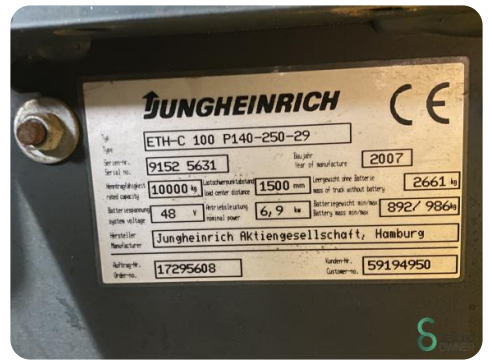
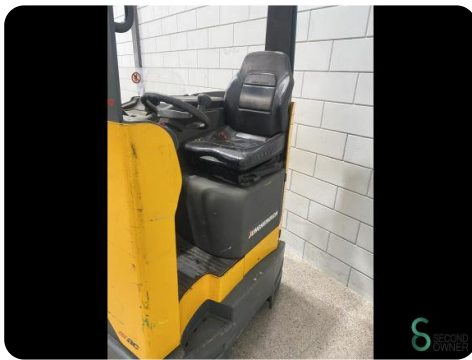
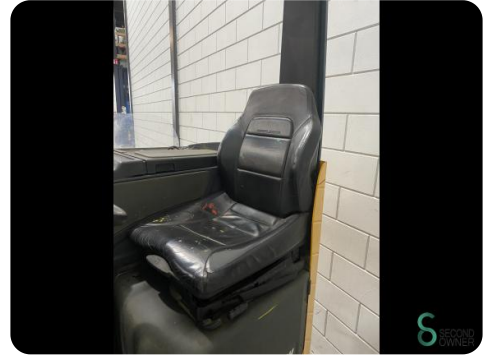
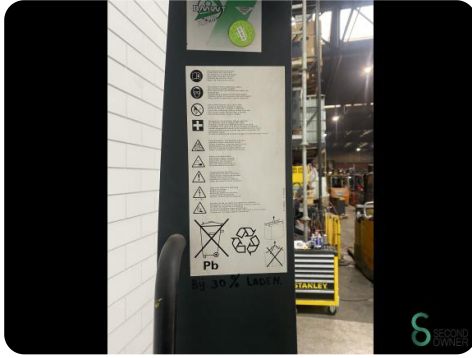
---

**Height**

---

**Weight**

---



Havenweg 6  
6603AS Wijchen

T: +31 6 11462913  
E: Koen@secondowner.com  
W: <https://secondowner.com>



<b>JUNGHEINRICH</b>		CE	
Type	ETH-C 100 P140-250-29	Year of manufacture	2007
Serial no.	9152 5631	Weight with battery	2661 kg
Max. load capacity	10000 kg	Load center distance	1500 mm
Battery system voltage	48 V	Battery weight with/without battery	892/ 986 kg
Manufacturer	Jungheinrich Aktiengesellschaft, Hamburg		
Manufacturer's no.	17295608	Customer no.	59194950