

Reach truck - Jungheinrich ETV216



Reach truck - Jungheinrich ETV216

WKH.4128



Elektric



1600kg



21396



2012

Brand Jungheinrich

Model

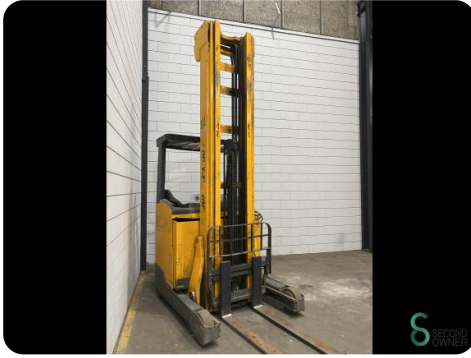
Year 2012

Specifications

Drive	Elektric
Capacity	775Ah
Battery voltage	48V
Options	Free-lift, Non-marking tires, Joystick
Free lift	2570mm
Overhead clearance	3450mm

Dimensions

Length	1900
Width	1270
Height	
Weight	3864



ETV 214 DL GE 120 872DZ
 91076519 2012
 1400 kg 600 mm
 48 V 1063,1175 kg
 2689 kg
 Jungheinrich AG, 22047 Hamburg, Germany
JUNGHEINRICH

CE		HAWKER		S.A. Enerbyte S.p.A. Via... 1146... www.enerbyte.com	
HAWKER PERFECT PLUS					
DESCRIPTION	5-PZS-775	NOMINAL VOLTAGE	48 V		
TYPE		STANDARD NOMINAL			
TYPE		RECHARGING			
TYPE		WARRANTY			
MODEL NUMBER	5492642008	CAPACITY	C ₈ 775.00 Ah		
NO. OF CELLS		CAPACITY			
TYPE		NUMBER OF CELLS	24 PCS		
ORIGINAL SUPPLIER	0935-50011-00	NO. OF ENTRIES			
NO. OF ENTRIES		WARRANTY PERIOD	1.145.00 kg		
WARRANTY PERIOD	120219146+147/JUNGHEINRICH	WARRANTY PERIOD	186.00 l		
PRODUCTION DATE	2013.03.2012	PRODUCTION DATE			
MADE IN		MADE IN			

• Gebrauchsanweisung beachten.
 • Please follow the instructions.
 • Se conformer à la notice d'emploi.
 • Gebrauchsanweisung lesen.



Havenweg 6
6603AS Wijchen

T: +31 6 11462913
E: Koen@secondowner.com
W: <https://secondowner.com>