

Forklift - Linde E16PH-02



Forklift - Linde E16PH-02

WKH5.788



Elektric



4960mm



1600kg



30361



2008

Brand Linde

Model E16PH-02

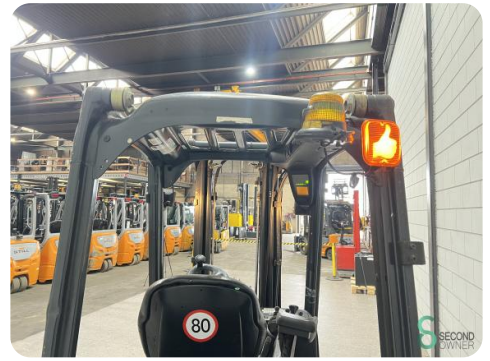
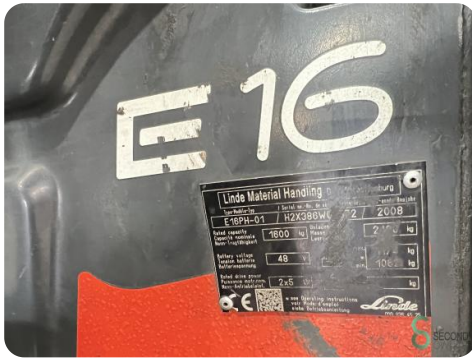
Year 2008

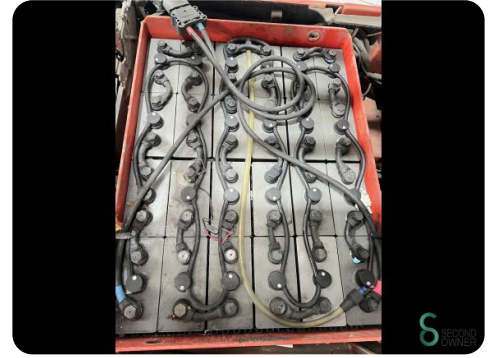
Specifications

Drive	Elektric
Capacity	775Ah
Battery voltage	48V
Battery year of construction	2018
Options	Work lights, Non-marking tires, Free-lift
Free lift	1720mm

Dimensions

Length	2080
Width	1070
Height	2220
Weight	3200





Havenweg 6
6603AS Wijchen

T: +31 6 11462913
E: Koen@secondowner.com
W: <https://secondowner.com>

