

Forklift - Linde E20



Forklift - Linde E20

WKH5.729



Elektric



4100mm



2000kg



10598



1998

Brand Linde

Model E20

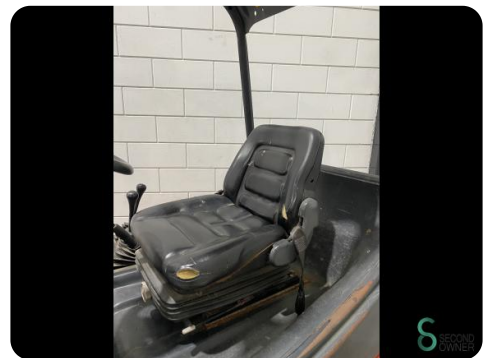
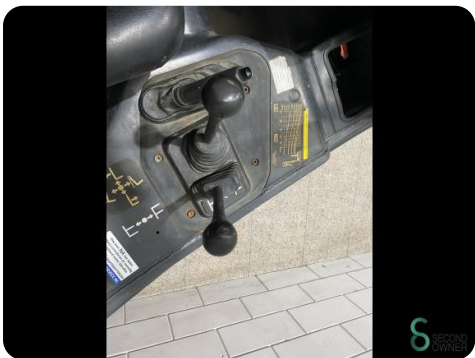
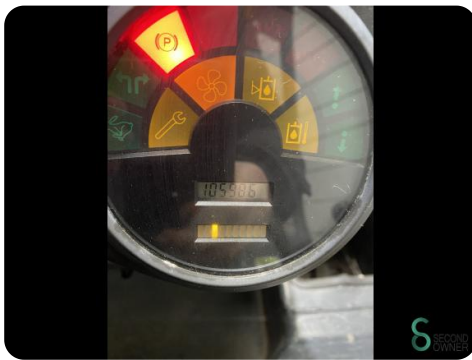
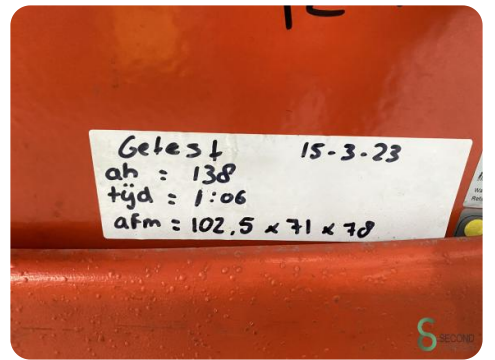
Year 1998

Specifications

Drive	Elektric
Capacity	620Ah
Brand/Type	marathon
Battery voltage	80V
Battery year of construction	2017
Options	Non-marking tires, Work lights

Dimensions

Length	2250
Width	1200
Height	2600
Weight	4076





Havenweg 6
6603AS Wijchen

T: +31 6 11462913
E: Koen@secondowner.com
W: <https://secondowner.com>

