

Forklift - Linde E20PL



Forklift - Linde E20PL

WKH.4618



Elektric



4650mm



2000kg



19803



2007

Brand Linde

Model E20PL

Year 2007

Specifications

Drive Elektric

Capacity 750Ah

Brand/Type GNB 6
EPZS

Battery voltage 48V

Battery year of construction 2017

Options Free-lift,
Work lights

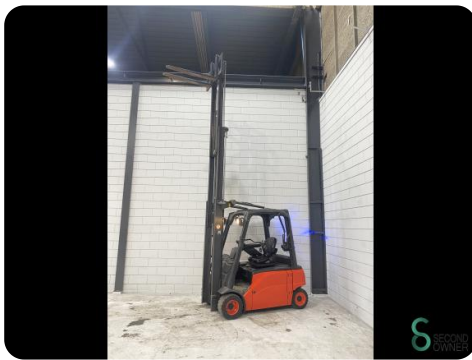
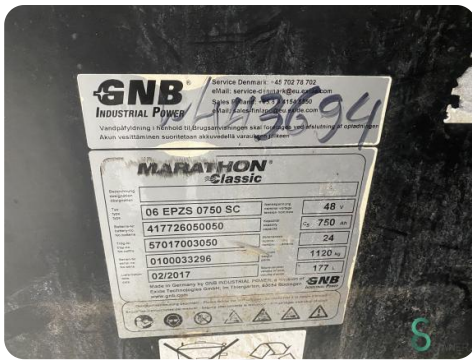
Dimensions

Length 2100

Width 1150

Height 2100

Weight 3669



Havenweg 6
6603AS Wijchen

T: +31 6 11462913
E: Koen@secondowner.com
W: <https://secondowner.com>

