

## Forklift - Linde E35L



## Forklift - Linde E35L

WKH.4053



Elektric



3200mm



3500kg



4400



2011

**Brand** Linde

**Model** E35L

**Year** 2011

### Specifications

**Drive** Elektric

**Capacity** 525Ah

**Battery voltage** 80V

**Battery year of construction** 2018

**Options** Work lights

**Overhead clearance** 2250mm

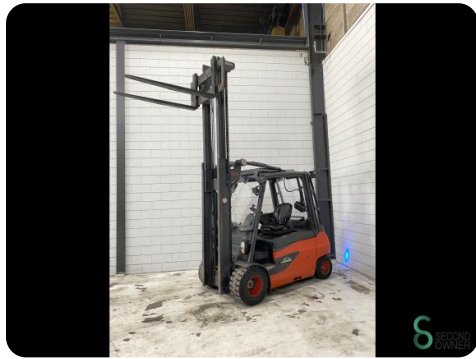
### Dimensions

**Length** 2600

**Width** 1200

**Height**

**Weight** 5551



Havenweg 6  
6603AS Wijchen

T: +31 6 11462913  
E: Koen@secondowner.com  
W: <https://secondowner.com>

