

Pallet truck - Still



Pallet truck - Still

WKH.4602



Elektric



2007



2016

Brand Still

Model

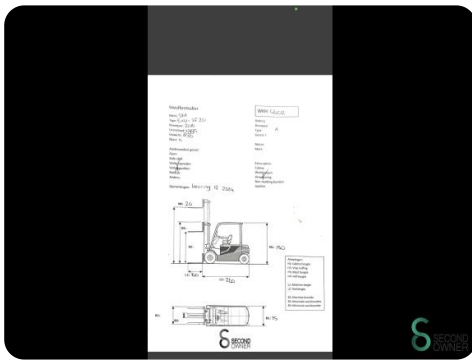
Year 2016

Specifications

Drive	Elektric
Battery voltage	24V
Inspection valid until	12-2024
Fork length	1600mm
Lifting capacity	2000kg
Lifting height	200mm

Dimensions

Length	2600
Width	750
Height	1500
Weight	830



Havenweg 6
6603AS Wijchen

T: +31 6 11462913
E: Koen@secondowner.com
W: <https://secondowner.com>

