

## Forklift - Still



## Forklift - Still

WKH.4207



Elektric



3800mm



3000kg



16331



2008

**Brand** Still

**Model**

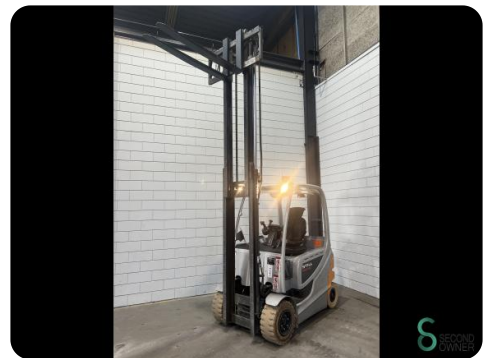
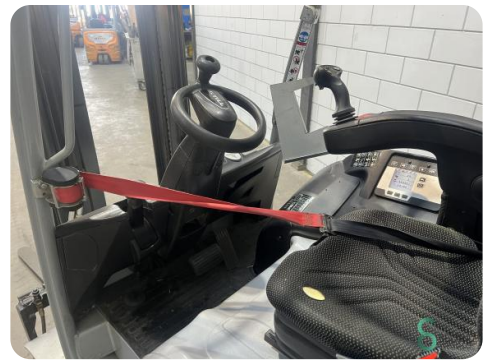
**Year** 2008

### Specifications

<b>Drive</b>	Elektric
<b>Capacity</b>	620Ah
<b>Brand/Type</b>	Midac 4PZS 620
<b>Battery voltage</b>	80V
<b>Battery year of construction</b>	2018
<b>Options</b>	Work lights, Joystick, Non-marking tires

### Dimensions

<b>Length</b>	2403
<b>Width</b>	1198
<b>Height</b>	2450
<b>Weight</b>	5152



Havenweg 6  
6603AS Wijchen

T: +31 6 11462913  
E: Koen@secondowner.com  
W: <https://secondowner.com>

