

## Forklift - Still



### Forklift - Still

WKH5.424



Elektric



4930mm



2500kg



10486



2014

**Brand** Still

**Model**

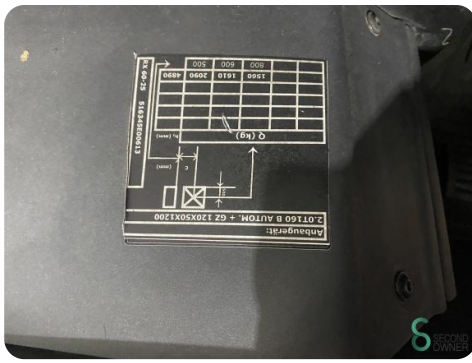
**Year** 2014

### Specifications

<b>Drive</b>	Elektric
<b>Capacity</b>	620Ah
<b>Brand/Type</b>	Still
<b>Battery year of construction</b>	2018
<b>Options</b>	Verwarming, Free-lift, Work lights, Full cabin, Joystick
<b>Free lift</b>	1600mm

### Dimensions

<b>Length</b>	2450
<b>Width</b>	1200
<b>Height</b>	2300
<b>Weight</b>	4651





Havenweg 6  
6603AS Wijchen

**T:** +31 6 11462913  
**E:** [Koen@secondowner.com](mailto:Koen@secondowner.com)  
**W:** <https://secondowner.com>

