

## Forklift - Still



### Forklift - Still

WKH.3663



Elektric



6400mm



1500kg



9823



2012

**Brand** Still

**Model**

**Year** 2012

### Specifications

**Drive** Elektric

**Capacity** 625Ah

**Brand/Type** 5 PZS  
625

**Battery voltage** 48V

**Battery year of construction** 2012

**Options** Non-marking tires

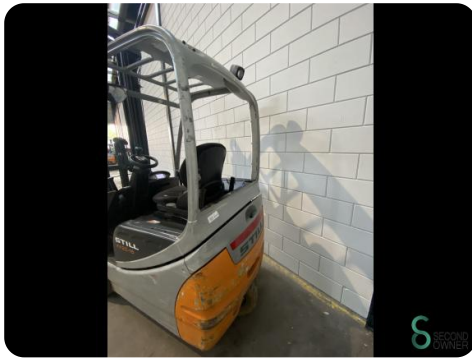
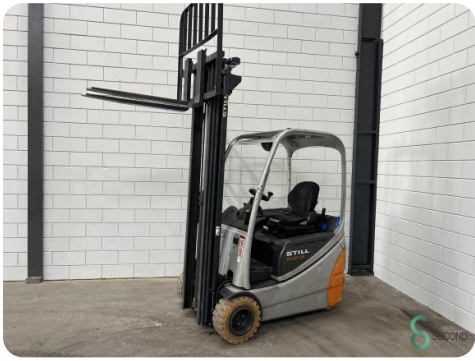
### Dimensions

**Length** 1900

**Width** 1200

**Height** 2730

**Weight** 2763



Havenweg 6  
6603AS Wijchen

T: +31 6 11462913  
E: Koen@secondowner.com  
W: <https://secondowner.com>

