

Forklift - Still



Forklift - Still

WKH.4545



Elektric



4500mm



3500kg



1242



2019

Brand Still

Model

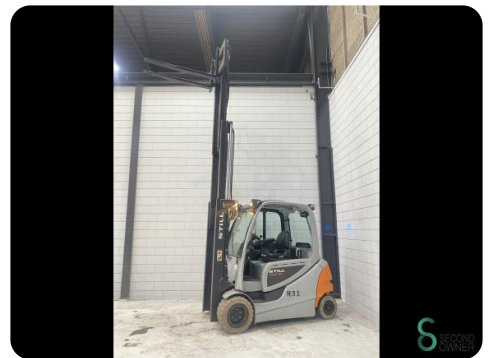
Year 2019

Specifications

Drive	Elektric
Capacity	775Ah
Brand/Type	Still 80V 5 PZS 775
Battery voltage	80V
Battery year of construction	2019
Free lift	1500mm

Dimensions

Length	2523
Width	1250
Height	2130
Weight	5539



Havenweg 6
6603AS Wijchen

T: +31 6 11462913
E: Koen@secondowner.com
W: <https://secondowner.com>

