

Forklift - Still



Forklift - Still

WKH.4541



Elektric



4330mm



1600kg



6596



2018

Brand Still

Model

Year 2018

Specifications

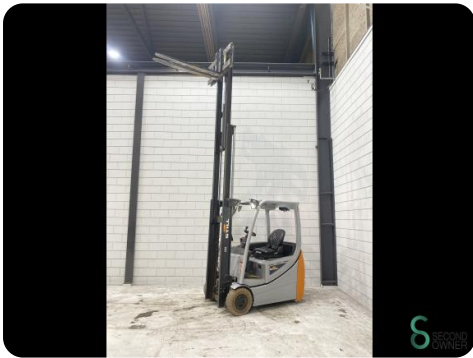
Drive	Elektric
Capacity	625Ah
Brand/Type	GNB
Battery year of construction	2018
Free lift	1400mm
Overhead clearance	1950mm

Dimensions

Length	2000
Width	1200
Height	1980
Weight	2763



STILL GmbH Berzeliusstr. 10 D-22113 Hamburg year of manufacture		2018
Type-Modelle-Typ / Serial no.-No. de série-Serien-Nr.	RX20-16 / 516221100786	
Rated capacity Capacité nominale Nenn-Tragfähigkeit	1600 kg	Unladen mass Masse à vide Laergewicht
Battery voltage tension de batterie Ladungsspannung	48 V	max. 898 kg min. 812 kg
Rated drive power Puissance motrice Nenn-Antriebsleistung	13 kW	
* see operating instructions * voir Mode d'emploi * siehe Betriebsanleitung		



Havenweg 6
6603AS Wijchen

T: +31 6 11462913
E: Koen@secondowner.com
W: <https://secondowner.com>

