

## Orderpicker - Still CX 20



## Orderpicker - Still CX 20

WKH6.637



Elektric



2017



5683

**Brand** Still

**Model** CX 20

**Year** 2017

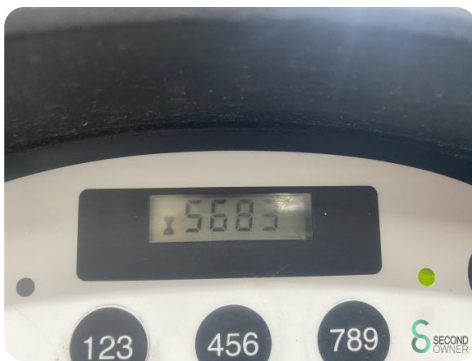
### Specifications

<b>Drive</b>	Elektric
<b>Battery voltage</b>	24V
<b>Inspection valid until</b>	04.2025
<b>Working level</b>	Laag
<b>Maximum fork width</b>	520mm
<b>Overhead clearance</b>	1250mm

[For all product specifications click here](#)

### Dimensions

<b>Length</b>	4800 mm
<b>Width</b>	800 mm
<b>Height</b>	1250 mm
<b>Weight</b>	1150 kg



Havenweg 6  
6603AS Wijchen

T: +31 611462913  
E: [koen@secondowner.com](mailto:koen@secondowner.com)  
W: <https://secondowner.com>

