

Order picker - Still CX 20



Order picker - Still CX 20

WKH.3878



Elektric



5452



2017

Brand Still

Model CX 20

Year 2017

Specifications

Drive Elektric

Capacity 465Ah

Brand/Type 3 PZS
465

Battery voltage 24V

Battery year of construction 2017

Man-up 1

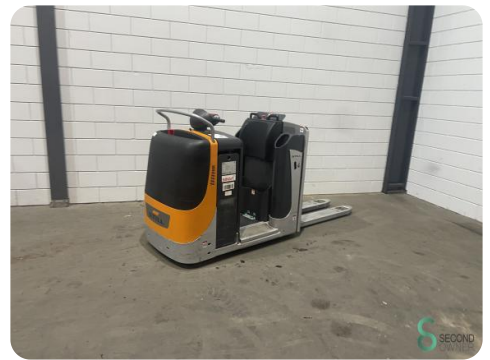
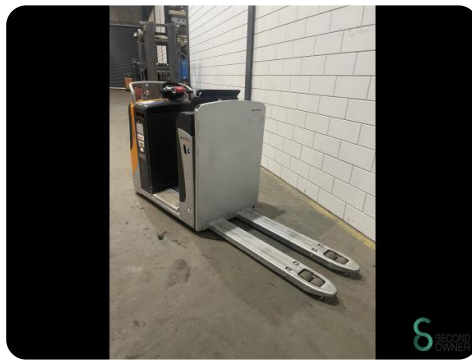
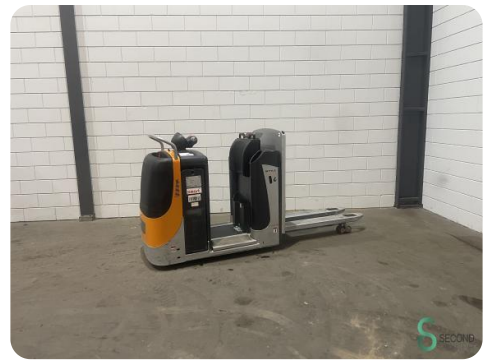
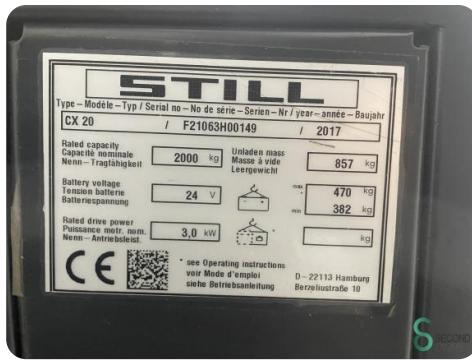
Dimensions

Length

Width

Height

Weight



Havenweg 6
6603AS Wijchen

T: +31 6 11462913
E: Koen@secondowner.com
W: <https://secondowner.com>

