

Order picker - Still CX 20



Order picker - Still CX 20

WKH.4224



Elektric



3102



2018

Brand Still

Model CX 20

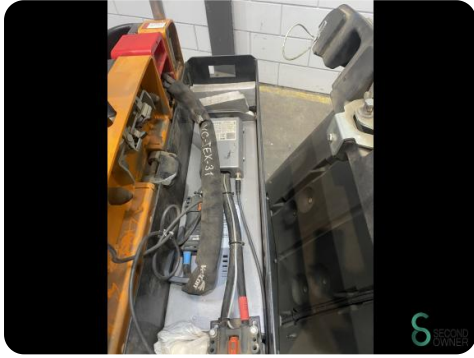
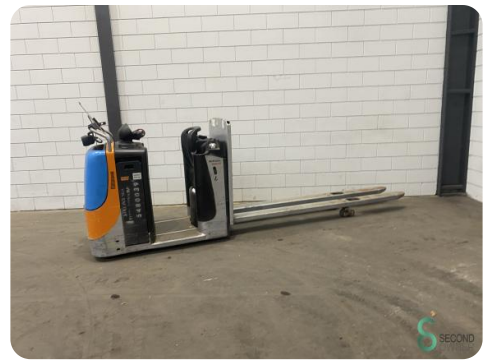
Year 2018

Specifications

Drive	Elektric
Battery voltage	24V
Overhead clearance	1500mm
Fork length	2400mm
Lifting capacity	2000kg

Dimensions

Length	3800
Width	800
Height	1500
Weight	1200



STILL

Type - Modèle - Typ / Serial no - No de série - Serien - Nr / year - année - Baujahr
CX 20 / F21063J00012 / 2018

Rated capacity Capacité nominale Nenn - Tragfähigkeit	2000 kg	Unladen mass Masse à vide Leergewicht	734 kg
Battery voltage Tension batterie Batteriespannung	24 V	max	470 kg
		min	382 kg
Rated drive power Puissance motr. nom. Nenn - Antriebsleist.	3,0 kW		kg

CE  * see Operating instructions
voir Mode d'emploi
siehe Betriebsanleitung

D - 22113 Hamburg
Berzeliusstraße 10





Havenweg 6
6603AS Wijchen

T: +31 6 11462913
E: Koen@secondowner.com
W: <https://secondowner.com>