

Stacker - Still EXD-S20



Stacker - Still EXD-S20

WKH.4214



Elektric



8801



2019

Brand Still

Model EXD-S20

Year 2019

Specifications

Drive	Elektric
Lifting capacity	2000kg
Mast	Duplex
Lifting height	1580mm

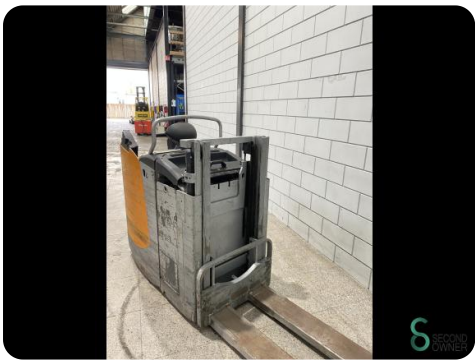
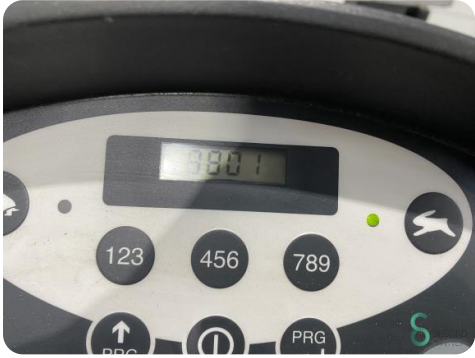
Dimensions

Length

Width

Height

Weight



Havenweg 6
6603AS Wijchen

T: +31 6 11462913
E: Koen@secondowner.com
W: <https://secondowner.com>

