

Stacker - Still EXU-H18



Stacker - Still EXU-H18

WKH.4576



Elektric



413



2017

Brand Still

Model EXU-H18

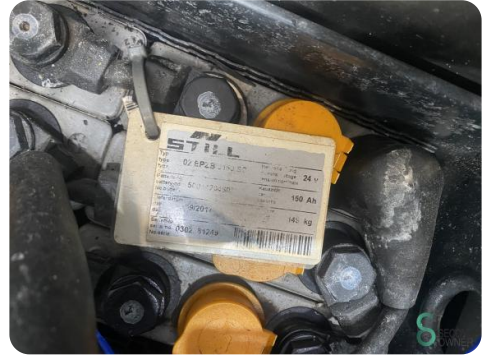
Year 2017

Specifications

Drive	Elektric
Capacity	150Ah
Brand/Type	Still 02 EPZB 0160 SO
Battery voltage	24V
Battery year of construction	2017
Inspection valid until	11-2025

Dimensions

Length	1900
Width	750
Height	1400
Weight	593



Havenweg 6
6603AS Wijchen

T: +31 6 11462913
E: Koen@secondowner.com
W: <https://secondowner.com>

