

## Stacker - Still EXU-H20



## Stacker - Still EXU-H20

WKH.3943



Elektric



5134



2014

**Brand** Still

**Model** EXU-H20

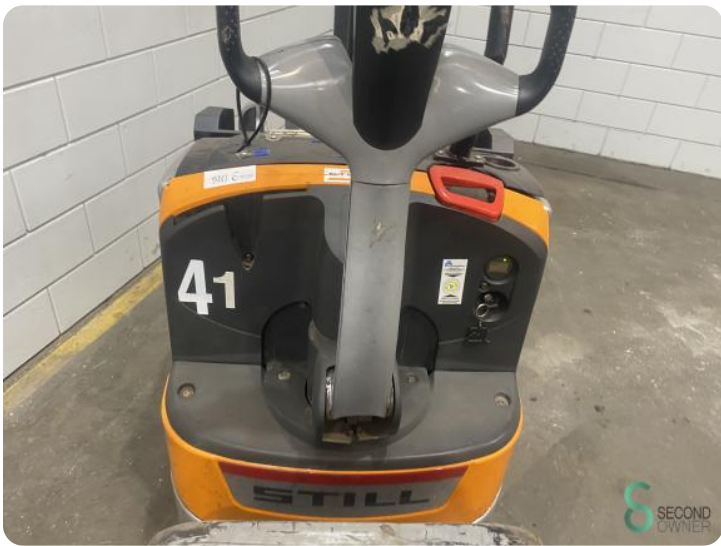
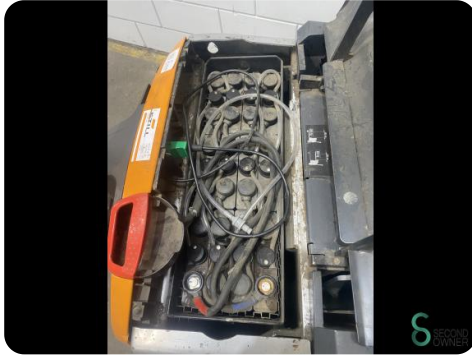
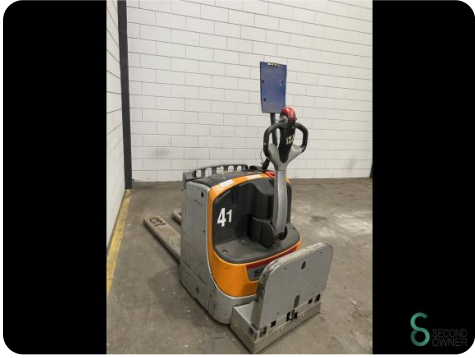
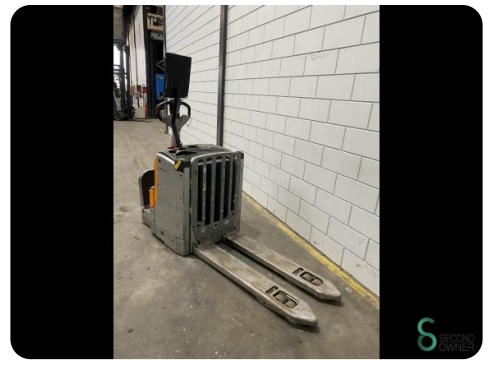
**Year** 2014

### Specifications

<b>Drive</b>	Elektric
<b>Battery voltage</b>	24V
<b>Options</b>	Doppelstock
<b>Overhead clearance</b>	1650mm
<b>Fork length</b>	1180mm
<b>Lifting capacity</b>	2000kg

### Dimensions

<b>Length</b>	1180
<b>Width</b>	700
<b>Height</b>	1650
<b>Weight</b>	703



Havenweg 6  
6603AS Wijchen

T: +31 6 11462913  
E: Koen@secondowner.com  
W: <https://secondowner.com>

