

## Stacker - Still EXU-SF14



## Stacker - Still EXU-SF14

WKH.4249



Elektric



3949



2018

**Brand** Still

**Model** EXU-SF14

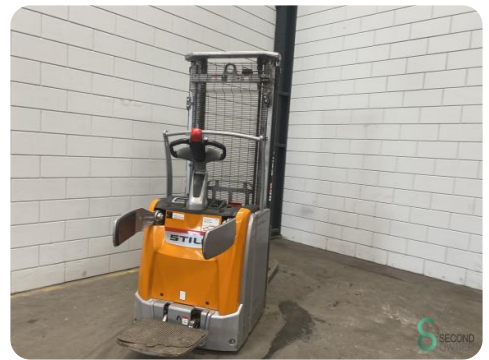
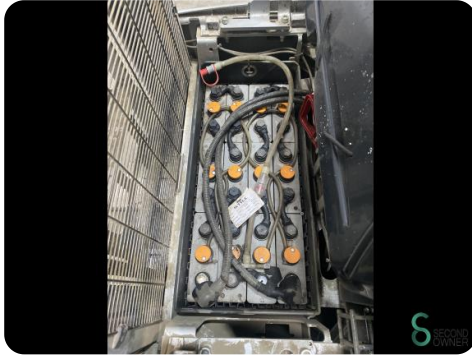
**Year** 2018

### Specifications

<b>Drive</b>	Elektric
<b>Capacity</b>	345Ah
<b>Brand/Type</b>	3 PZS 345
<b>Battery voltage</b>	24V
<b>Battery year of construction</b>	2018
<b>Overhead clearance</b>	2100mm

### Dimensions

<b>Length</b>	2400
<b>Width</b>	800
<b>Height</b>	2100
<b>Weight</b>	1468



Havenweg 6  
6603AS Wijchen

T: +31 6 11462913  
E: [Koen@secondowner.com](mailto:Koen@secondowner.com)  
W: <https://secondowner.com>

