

## Pallet truck - Still EXU-SF20



## Pallet truck - Still EXU-SF20

WKH.4602



Elektric



2007



2016

**Brand** Still

**Model** EXU-SF20

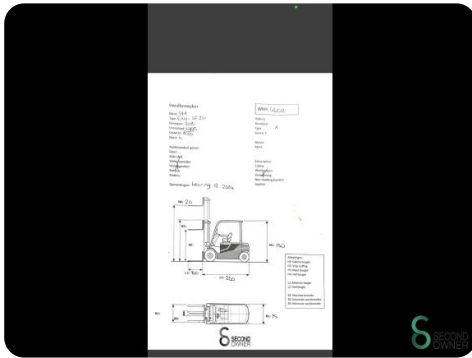
**Year** 2016

### Specifications

<b>Drive</b>	Elektric
<b>Battery voltage</b>	24V
<b>Inspection valid until</b>	12-2024
<b>Fork length</b>	1600mm
<b>Lifting capacity</b>	2000kg
<b>Lifting height</b>	200mm

### Dimensions

<b>Length</b>	2600
<b>Width</b>	750
<b>Height</b>	1500
<b>Weight</b>	830



Havenweg 6  
6603AS Wijchen

T: +31 6 11462913  
E: Koen@secondowner.com  
W: <https://secondowner.com>

