

## Stacker - Still EXV-SF14



## Stacker - Still EXV-SF14

WKH5.270



1400kg



1930mm



Elektric



2019



1304

**Brand** Still

**Model** EXV-SF14

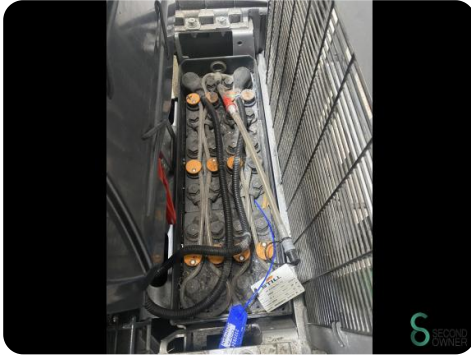
**Year** 2019

### Specifications

<b>Drive</b>	Elektric
<b>Capacity</b>	250Ah
<b>Brand/Type</b>	Still
<b>Battery voltage</b>	24V
<b>Battery year of construction</b>	2019
<b>Inspection valid until</b>	04.2025

### Dimensions

<b>Length</b>	2300 mm
<b>Width</b>	800 mm
<b>Height</b>	1430 mm
<b>Weight</b>	1252 kg



Havenweg 6  
6603AS Wijchen

T: +31 611462913  
E: koen@secondowner.com  
W: https://secondowner.com

