

Stacker - Still EXV-SF16



Stacker - Still EXV-SF16

WKH.4151



Elektric



3333



2018

Brand Still

Model EXV-SF16

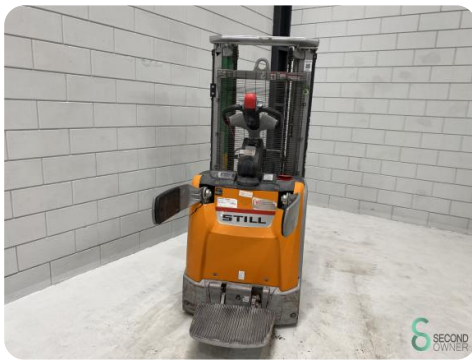
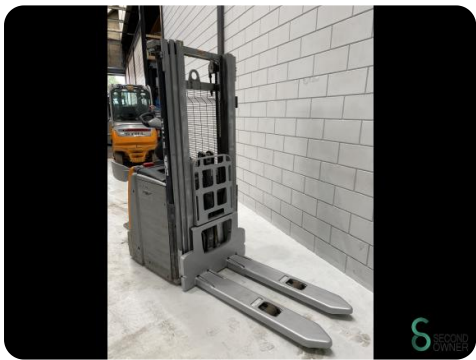
Year 2018

Specifications

| | |
|-------------------------------------|---------------------------|
| Drive | Elektric |
| Capacity | 300Ah |
| Brand/Type | Triathlon 3 PZV 300 |
| Battery voltage | 24V |
| Battery year of construction | 2022 |
| Inspection valid until | 08.2024 |

Dimensions

| | |
|---------------|------|
| Length | 2400 |
| Width | 800 |
| Height | 1920 |
| Weight | 1589 |



Havenweg 6
6603AS Wijchen

T: +31 6 11462913
E: Koen@secondowner.com
W: <https://secondowner.com>

