

Stacker - Still EXV-SF16



Stacker - Still EXV-SF16

WKH.4348



Elektric



4158



2018

Brand Still

Model EXV-SF16

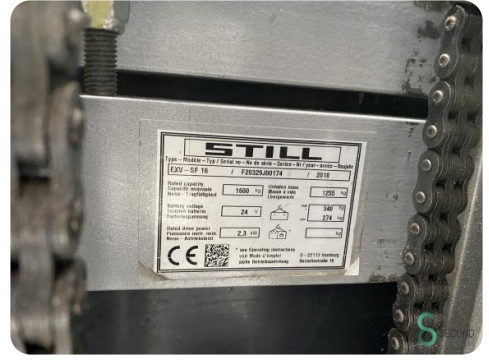
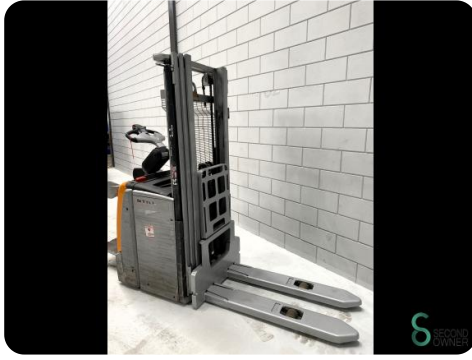
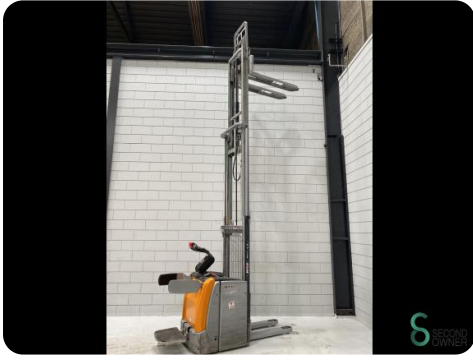
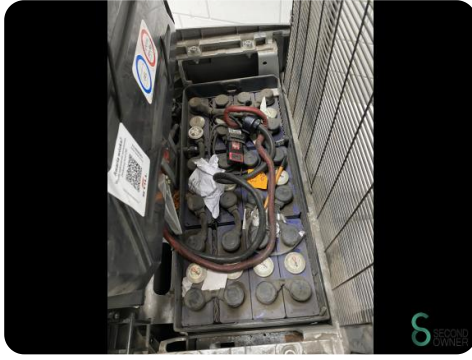
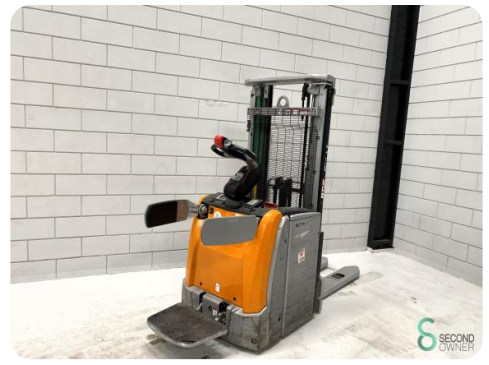
Year 2018

Specifications

Drive	Elektric
Battery voltage	24V
Inspection valid until	08.2024
Free lift	1450mm
Overhead clearance	1920mm
Fork length	1150mm

Dimensions

Length	2500
Width	800
Height	1920
Weight	1595



Havenweg 6
6603AS Wijchen

T: +31 6 11462913
E: Koen@secondowner.com
W: <https://secondowner.com>



STILL	
EXV - SF 16	
Type - Beschreib. / Type - Description	F20523-00114
Rated capacity / Nennlastkapazität	1000 kg
Rated lift height / Nennhubhöhe	3020 mm
Battery voltage / Batteriespannung	24 V
Rated drive power / Nennantriebsleistung	2,3 kW
* see operating instructions	
© 2012 Still	