

## Reach truck - Still FM-X17



### Reach truck - Still FM-X17

WKH5.810



Elektric



1700kg



3416



2019

**Brand** Still

**Model** FM-X17

**Year** 2019

### Specifications

**Drive** Elektric

**Capacity** 775Ah

**Brand/Type** Still

**Battery voltage** 48V

**Battery year of construction** 2019

**Options** tribe\_selection\_lists.opties.Weegsysteem, Camera, Free-lift, Hoogtemeter

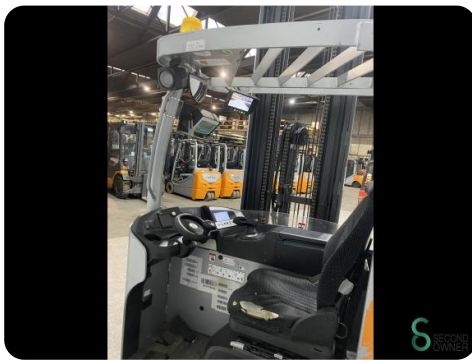
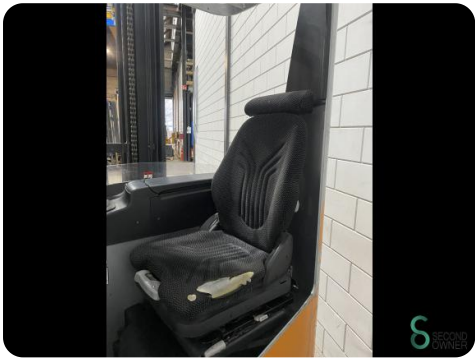
### Dimensions

**Length**

**Width**

**Height**

**Weight**



<b>STILL</b>	
Typ / Model / Typ / Serial no. / No. de série / Serien-Nr. / Jahr / year / год / Jahr	
FM-X 47 / 511903V01094 / 2019	
Rated capacity / Capacité nominale / Nenn-/Nennlastgewicht	1700 kg
Overall mass / Masse à vide / Gesamtgewicht	2832 kg
Battery voltage / Tension de batterie / Batteriespannung	48 V
Rated lift capacity / Capacité nominale de levage / Nennlastgewicht	1175 kg
Rated lift capacity / Capacité nominale de levage / Nennlastgewicht	1063 kg
Rated lift capacity / Capacité nominale de levage / Nennlastgewicht	6.5 kW
D-22773 Hamburg	

<b>STILL</b>	
Nominal Voltage / Tension nominale / Nennspannung	
48V 5 PZS 775	
Nominal Capacity / Capacité nominale / Nennkapazität	
48 Volt	
Nominal Capacity / Capacité nominale / Nennkapazität	
CS 775 Ah	
Nominal Voltage / Tension nominale / Nennspannung	
24	
Nominal Capacity / Capacité nominale / Nennkapazität	
1137 kg	
Date of Manufacture / Date de fabrication / Herstellungsdatum	
02.08.2019	
Nominal Voltage / Tension nominale / Nennspannung	
186 J	



Havenweg 6  
6603AS Wijchen

**T:** +31 6 11462913  
**E:** Koen@secondowner.com  
**W:** <https://secondowner.com>

